

Product Distribution Priorities, Disinfectant Options and Communication during Supply Disruptions in the Pandemic

Note: This information was developed by the Disinfectant Working Group (WG) to describe the prioritization process for distributing disinfectant supplies as supplies are disrupted during the pandemic.

If you have any questions or comments contact IPC at ipsurvstdadmin@ahs.ca

Best practice recommendations

1. Product distribution priorities

1.1 Contracting Procurement and Supply Management (CPSM) minimizes the impact of supply disruptions and prioritizes product distribution by:

- Filling requests with the same product or nearest equivalent for existing customers before distributing to third parties, e.g., community clinics, corrections.
- Maintaining established supply distribution and minimizing product substitutions.
- Distributing to areas of critical need first, e.g., emergency rooms (ER), medical device reprocessing departments (MDRD), operating rooms (OR), or outbreak areas. Refer to Table 1 for details.

1.2 Organizational leadership representatives, e.g., CPSM, infection prevention and control (IPC), and Environmental Services (ES) monitor and discuss how to facilitate distribution if supply chain experiences significant shortages, e.g., use of a ready to dispense systems.

1.3 End-users help maintain supply availability by:

- Conserving [ready-to-use disinfectant wipes](#) for [non-critical medical devices](#), non-medical items, e.g., [electronics](#), and environmental cleaning where quick turn-around-time is required.
- Following recommendations in the [Cleaning and Disinfection during the COVID-19 Pandemic: Addressing Disinfectant Supply Challenges](#) including reading and posting product substitution notices (PSN) and contacting their site CPSM site supervisor regarding supply shortages and ordering information.
- Never hoarding or stockpiling supplies as this creates supply challenges in other areas and wastage through expired supplies.

2. Disinfectant/Dispensing options

2.1 Effective disinfectant and dispensing options are described in Table 2.

- Continue with existing disinfectant distribution processes unless there is a change in product availability and a change of systems is unavoidable to ensure that all systems and products are effective and reliable.

3. Communicating changes about supply issues

3.1 As soon as supply issues are identified CPSM:

- Notifies and consults with Disinfectant WG members including Workplace Health and Safety, Environmental Services, Public Health and Infection Prevention and Control representatives to evaluate and discuss available options.
- Provides product substitution notices (PSN) to notify end users if current supplies are not available and a substitute is provided.

3.2 WG members communicate about supply challenges and changes to their colleagues and contacts.

3.3 Automatic substitution:

- Supply carts are automatically stocked with the substitution product which has been pre-approved as a suitable/best option alternate.

Product Distribution Priorities, Disinfectant Options and Communication during Supply Disruptions in the Pandemic | 2

- 3.4 The following documents have been developed or updated during the pandemic to supplement the [Principles for Environmental Cleaning and Disinfection](#) and to inform users about cleaning and disinfectant products and supply challenges. These documents are available on the [IPC External Website](#), Best Practice Recommendations, [Equipment Cleaning Disinfection and Storage](#) tab:
- [Cleaning and Disinfection during the COVID-19 Pandemic: Addressing Disinfectant Supply Challenges](#)
 - [Cleaning and Disinfection Products Supplied to Community Settings during the COVID-19 Pandemic](#)
 - [Ready-to-Use Disinfectant Wipes - Key Points](#)

Table 1: CPSM Product Distribution Priorities

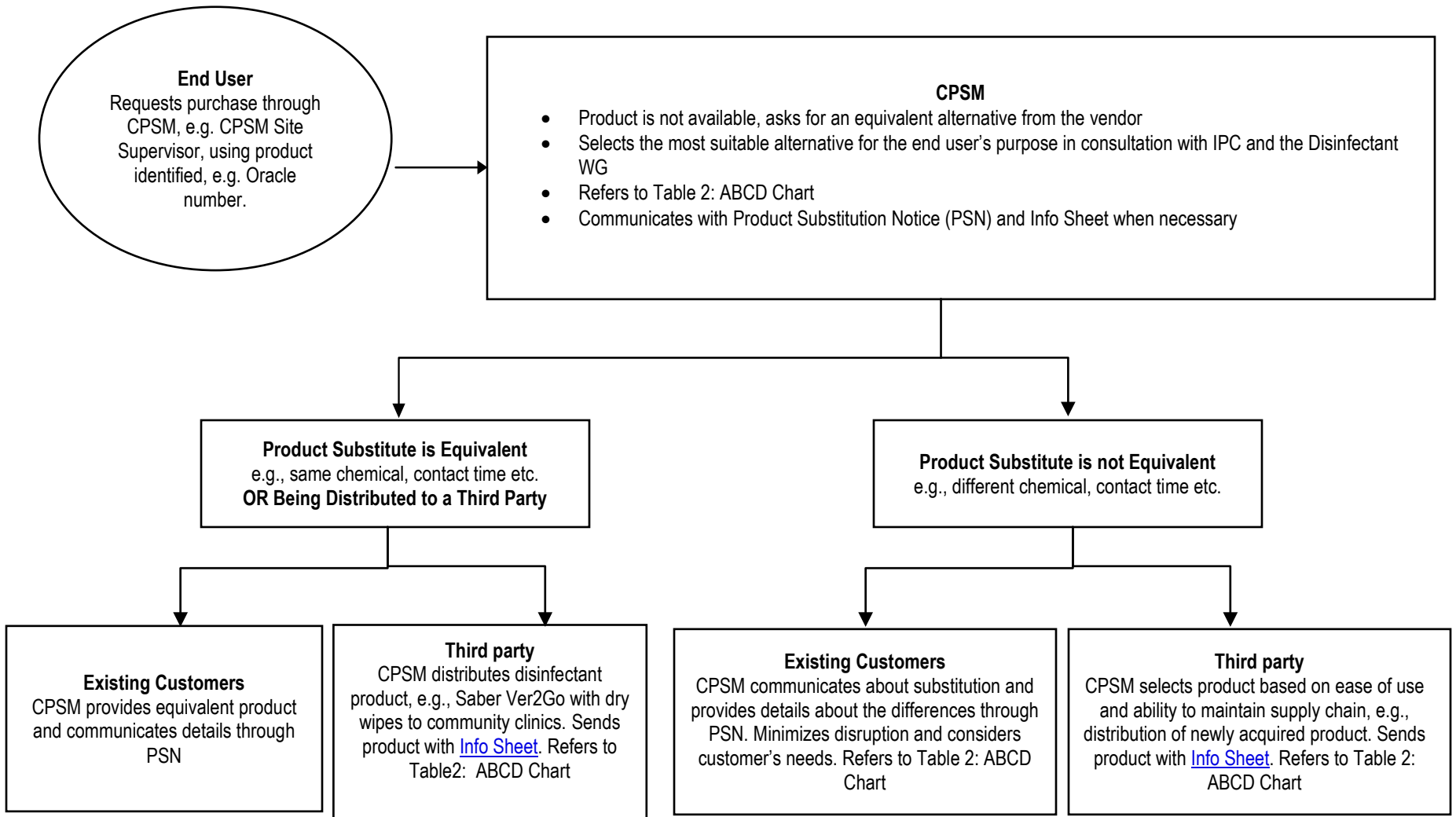


Table 2: ABCD Chart for Dispensing/Disinfectant Options

The overarching principle is to continue with existing disinfectant distribution processes unless there is an opportunity/resources available to switch to less convenient product. All options are equally effective. Do not switch for convenience.

	System	Supplies Required	Infrastructure	Training	Examples of users	Convenience/Supply issues
A	RTU disinfectant wipes	Self-contained	Storage areas	RTU disinfectant wipes info sheet	Clinical areas Priority to areas requiring frequent cleaning of surfaces and non-critical medical devices e.g., high traffic/turnover of patients/ ER, COVID-19 waiting rooms, LTC with COVID-19 patients	Very convenient but supplies are challenged and anticipate shortages
B	Ready to use (RTU) liquid disinfectant (1L) with dry wipes supplied or cloths	RTU liquid disinfectant in containers, cloths	Storage area	Contact time requirements, safe handling etc. included in info sheets	General surface and equipment cleaning Clinical areas including ER/trauma, Intensive care units, oncology, diagnostic imaging, labour and delivery, pediatrics, surgery, general medicine, bronchoscopy, endoscopy, Allied Health, community settings	Convenient and easy to use Supply adequate at present
C	Manual dispensing	Disinfectant concentrate, measuring cup, Water, Container, Test strips, documentation/ log cloths	Preparation area for diluting disinfectant, storing reusable containers, labels, sharpie marker Storage area if not prepared for immediate use	Resource intensive in terms of staff time. Training to include correct dilutions, accuracy, testing, documentations	Clinical areas Unit specific solution to shortages – more manageable for short term	Once dispensed is convenient/difficult to maintain adequate supply
D	Ready to Dispense System	Disinfectant concentrate, ready to dispense equipment, test strips, documentation/ log, buckets or containers, cloths	Waterline/tap/ hose Disinfectant concentrate Area for dispensing/ storage if not for immediate use	Familiar with dispensing system, testing of concentration documentation	General surface and equipment cleaning Nutrition and Food Services Environmental Services MDR OR Long term care Environmental and non-critical equipment cleaning in all healthcare facility locations including clinical areas	Yes, this equipment is in demand and supply may be limited. Once installed future supply challenges would not be anticipated. Convenient for use with buckets or containers