



FEMA



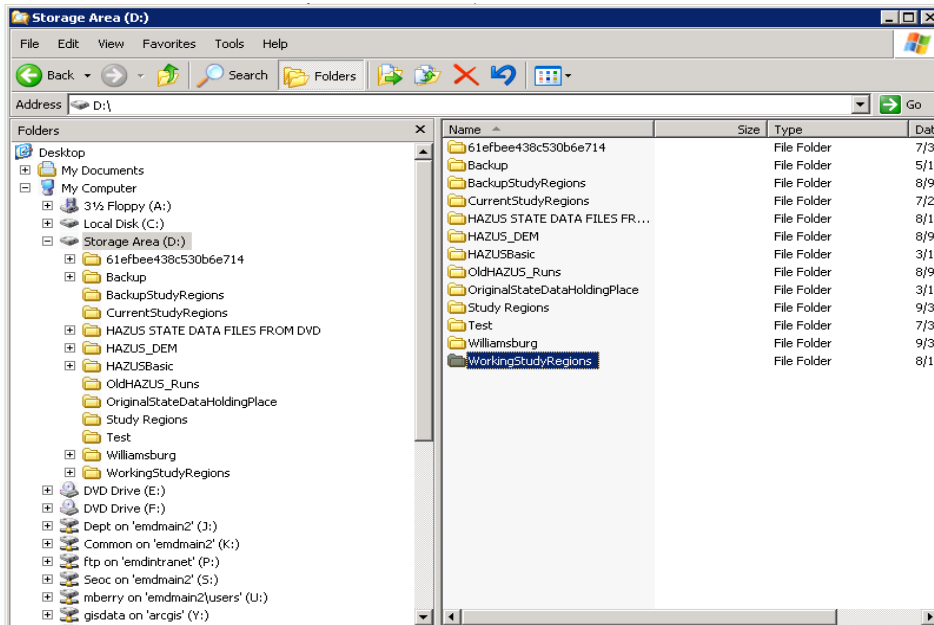
# Storing Study Regions – Choose the Best Location for Your Purposes

The default Install Wizard in Hazus automatically stores study regions in the C:\Program Files\HAZUS-MH directory. This default may become problematic for some users due to limited disk space when saving large or multiple study regions. Also, organizations often deny administrative privileges to the program files directory which may cause a problem generating new study regions or working with data.

Outlined below are the steps needed to remedy this potential problem by changing the location where study regions are stored on your hard drive or network. It is recommended that you backup your current study regions before beginning so that you do not lose any analysis done to date.

## Step 1:

Create a folder in the location where you want Hazus to save study regions. In the example below, the folder name is WorkingStudyRegions. Do not leave spaces in the folder name; if needed, use underscores.



Written by Melissa Berry, SC Emergency Management Division and Nick Delmedico, FEMA Headquarters

## REMINDER:

Be cautious because this process breaks existing regions.

To preserve your data, closely follow the steps provided. Exporting the study regions and importing them again after the registry change is essential. Using a network location to store regions does not work reliably. Keep directory names short and meaningful and try to avoid using blank spaces. One solution to shared regions is to keep a network file of your Hazus project files (.hpr) that can be downloaded and locally imported as needed.

**RiskMAP**  
Increasing Resilience Together



FEMA

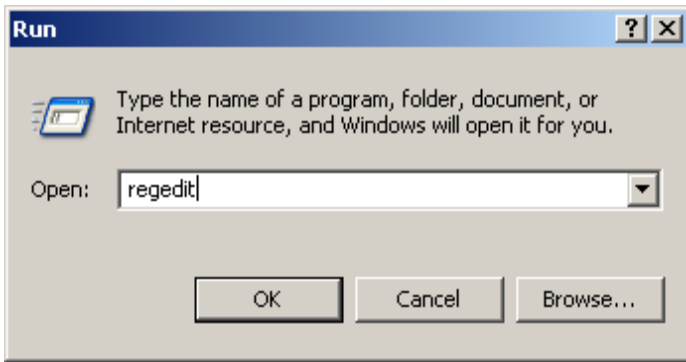


Open Hazus and use the Startup Wizard to export any current study regions. Export these regions to a temporary location on your machine. Exit Hazus.

**Step 3:**

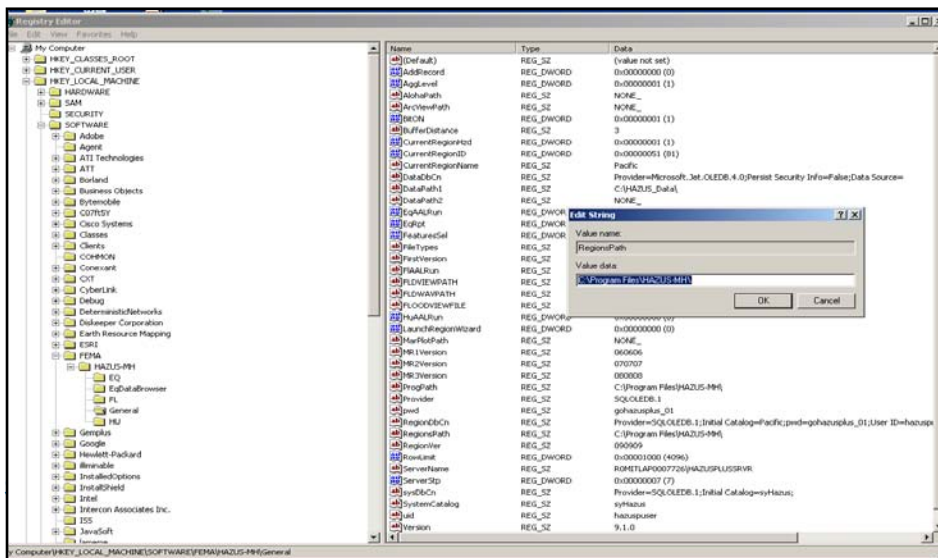
Open the Registry Editor by selecting Start → Run. Type in "regedit" in the text box and click on OK.

*Note: Administrative privileges in Windows are required to make changes to the registry.*



**Step 4:**

Locate the proper registry setting: My Computer >> HKEY\_LOCAL\_MACHINE >> SOFTWARE >> FEMA >> HAZUS-MH >> General >> RegionsPath. Select RegionsPath in the right pane. The value is likely set to the location of your local machine's hard drive (C:\) as seen in the example below.





FEMA



Double click RegionsPath. In the Value data box, change the setting to the new location for the study regions. In this example, the path is **D:\WorkingStudyRegions\**. You must include the backslash “\” at the end. Click on OK when finished. Close the Registry Editor box.

*Step 6:*

Open Hazus and using the Startup Wizard, import all saved study regions from the temporary location. They will automatically be imported to the new study region location assigned in the Registry Editor. Test Hazus by creating a new region. The study region should be saved in the new location.

*Benefits of this Method*

- Allows users to store data in a specified location.
- Enables users to free space up on their C drives.
- Does restrict access users without administrative privileges.

**RiskMAP**  
Increasing Resilience Together