



Special Needs Emergency Preparedness

NRC Division of Preparedness and Response

December 2006

Lisa Gibney, CEM

Emergency Preparedness Specialist
US Nuclear Regulatory Commission



Why I am really here...





One Very Proud Mom



Jimmy Gibney

Eagle Scout

Troop 29

Cedar Rapids,
IA



WHO do you work for????

Nuclear Power is to Special Needs as___?

- A. Apples are to Zebras?
- B. Hydro cars are to Shell Oil?
- C. French fries are to Ketchup?



Strategic Objective

To enable the Nation to use radioactive materials for beneficial civilian purposes while ensuring that public health and safety, common defense and security, and the environment are protected.



NRC Safety Philosophy

NRC Safety Philosophy

Ensures that the public is protected:

- Emergency plans surrounding a nuclear facility are well conceived and will work.
- Safety will not be wholly dependent on any single element of a design.



Who we are

- NRC is headed by 5 Commissioners appointed by the President to 5 yr terms
- The Chairman and Commissioners issue and oversee licenses for:
 - 104 Commercial power reactors
 - 36 Non-power (research & test) reactors
 - 47 Uranium recovery sites
 - 9 major fuel cycle facilities
 - 4,500 medical, industrial, academic & govt. materials licensees



Goals

- **Safety**-Ensure protection of public health and safety
- **Security**-Safe use and management of radioactive materials
- **Openness**-Ensure openness in our processes
- **Effectiveness**-NRC actions will be effective, efficient, realistic and timely
- **Management**-Ensure excellence in Agency management to carry out the strategic objectives



Risk Informed Emergency Preparedness

- Decision making which considers risk
- Based on 3 questions:
 - **What can go wrong?**
 - **How likely is it to happen?**
 - **What are the consequences?**



Regulatory Framework

- The Atomic Energy Act
- Title 10 Code of Federal Regulations
- NUREGs
- Regulatory Guides and review plans
- Licensing and inspection procedures
- Enforcement Guidance
- Generic Communications



EP and Special Needs

- Regulatory basis in 10CFR 50.47
- 44CFR350
- NUREG 0654



Special Populations Regulations

- **10CFR50.47(b)(10)** requires development of a range of protective actions for the public in the plume pathway
- **NUREG 0654-J.10.d**= “Mobility impaired” individuals



DHS- our Federal partner

DHS/FEMA

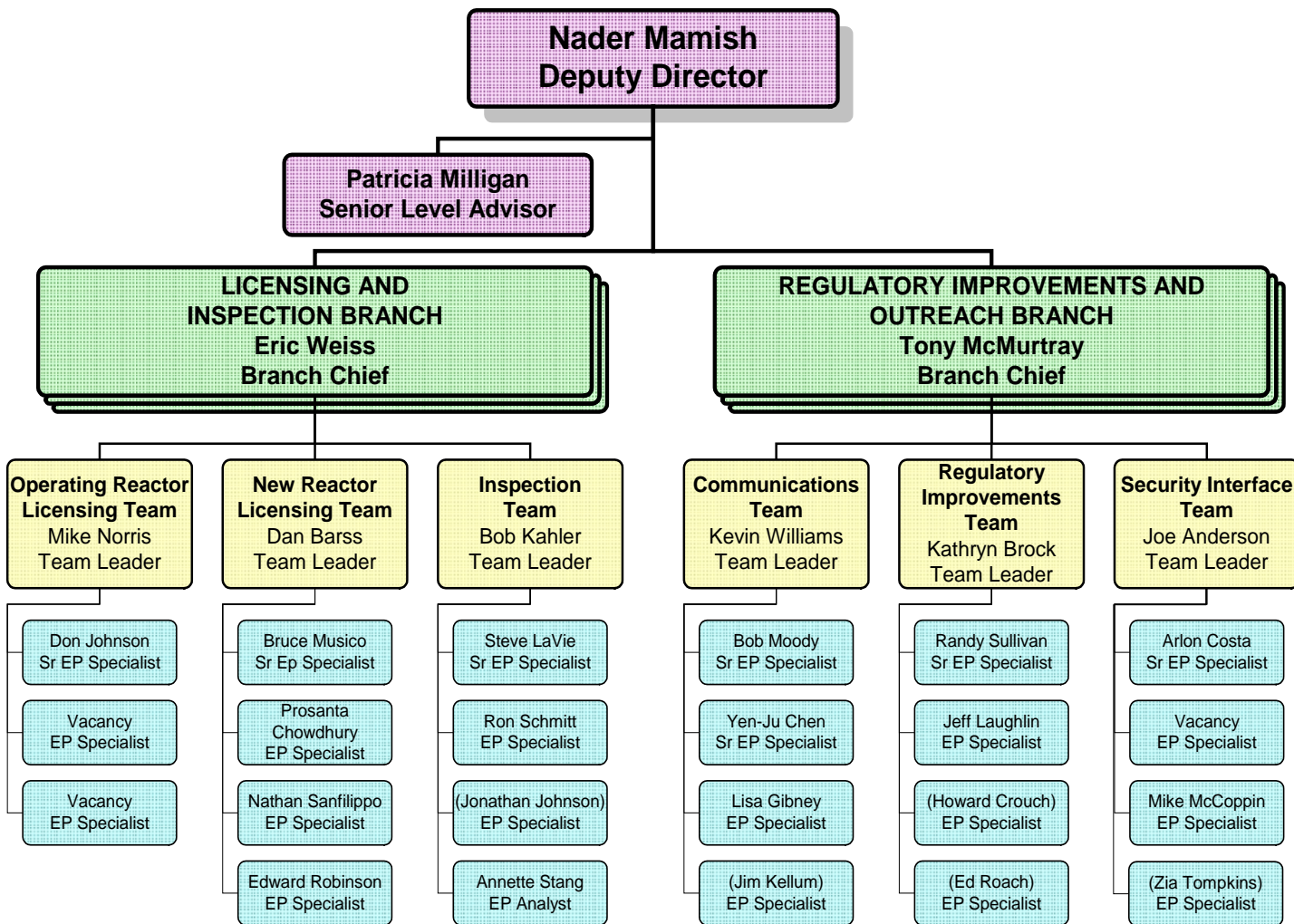
- Provides “reasonable assurance” that plans are adequate through
 - Plan Review
 - Biennial Exercise

Basis for Licensee to operate



Division of Preparedness and Response

Division of Preparedness and Response





Emergency Preparedness 101

- 4 Phases of Emergency Management
- The “Players”
- The “Playbook”
- What EMA **WILL** do
- What EMA **WON'T** do



Emergency Preparedness 101

The 4 phases of Emergency Management

- **Preparedness**
- **Mitigation**
- **Response**
- **Recovery**



Preparedness

- Taking steps to be ready to take care of yourself for 72 hours (minimum)
- Get informed & develop a Plan
- Collect & Assemble a Disaster Kit
- Learn where to seek shelter
- Have a Communication plan

- Examples:
 - READY Campaign



Mitigation

- Mitigation is any sustained action taken to **reduce or eliminate long-term risk** to life and property from a hazard event. This process has four steps:
 - Assessing risks
 - Organizing resources
 - Developing a plan
 - Implementing the plan and monitoring progress



Response

- Reach out to your local EMA office
- Understand what resources you have and what resources you depend on others to provide
- “Nth Degree” planning
(Out for 15 minutes? 6hrs? Overnight ?, etc)
- **PRACTICE! PRACTICE! PRACTICE!!**



Recovery

- Need both short and long term plans
- MOUs or other agreements
- Periodic updates/Re-visit those plans
- Coordinate with EMA and/or licensing bodies



The “Players”

Federal, State and Local divisions of:

- Emergency Management
- Public Health
- Agency on Aging
- Non-Governmental agencies

(Red Cross, Salvation Army, 211 United Way, Faith-based/Community-based organizations, etc.)



The “Playbook”

Multi-Hazard approach to tiered
Emergency Planning designed for:

- Facilities
- Communities
- State govt.
- Federal govt. (“NRP” National Response Plan)



What EMA **WILL** do

- Share the existing Community Plans
- Include your facility in those plans
- Involve you in Emergency Operations Center (EOC) activations for events
- Involve you in Emergency Response through their Drill/Exercise program
- Be a “*One-Stop Shop*” for resources



What EMA **WON'T** do

- Write facility plans for you
- Provide individual Go-Kits for clients
- Evacuate you if you don't register
(EMA has no Magic List of those in need-Clients must self-identify)
- Be able to supply meds, glasses, etc.
- Take your Pets** (Some can/Some can't)



Partnerships are the Key

- Understand the risks/hazards in your community
- Speak the Language (ICS, IMS, INS)
- Know what you'll **NEED**
(Plan, **DRILL**, Communication, Supplies)
- Know what you can **OFFER**
(EOC Rep, Planning partner, Host drills, Extra transport/staff)



Partnerships are the Key

Network/Learn who can help:

- Local- EMA/OEM, Health
- State Depts.- EMA, Health, Aging
- Feds- AOA, HHS, DHS,
- NGOs-NOD, Red Cross, AARP
- Private-EAD Associates,
- Mutual Aid Agreements with Sister Facilities



Idea Starters

- Medically Fragile Shelter
- Special Needs Registry
- Telephone Book Pages
- 211 United Way
- Elderly Consortium
- First Responder training



Tough Questions

- HIPPA Privacy Act Decision Tool
- Pets
- Rights of Individual VS Rescuer Safety
- What if the client refuses to take shelter?



Help as close as the Internet

- **National Organization on Disabilities**

www.nod.org

Key items:

- Emergency Preparedness Initiative (EPI)
- Links to READY.gov & other articles
- Virtual Binder of presentations from the *Conference on Emergency Preparedness for People with Disabilities*



Another great resource

- National Council on Disability...
Check out their recent report to President Bush called
“Savings Lives: Including people with Disabilities”...

http://www.ncd.gov/newsroom/publications/2005/saving_lives.htm



Internet Resources

www.nod.org

www.ncd.gov/newsroom/publications/2005/saving_lives.htm

www.dotcr.ost.dot.gov/asp/emergencyprep/asp

www.ada.gov/emergencyprep.htm

www.eadassociates.com



Internet Resources

- *Nobody Left Behind Project*
<http://www2.ku.edu/~rrtcpbs/resources/>
- *Dept. of Transportation's Website at:*
www.dotcr.ost.dot.gov/asp/emergencyprep/asp
- *American Red Cross*
http://www.redcross.org/services/disaster/0,1082,0_603_,00.html



The New Freedom Initiative

**Executive Order 13347: Individuals
with Disabilities in Emergency
Preparedness-July 22, 2004**

www.disabilityinfo.gov



Lessons Learned

Sycamore Mall and Eastdale Plaza, which houses Iowa City's driver's license bureau, were among the businesses evacuated. Detours resulting from the evacuation also tied up traffic in the area for about an hour.

About 200 people were evacuated from Goodwill Industries and Systems Unlimited, two social service agencies on First Avenue. Most of the people made a three-block trek to a Hy-Vee grocery store, where they congregated in the parking lot or huddled in the airconditioned cafe.

"We looked like a line of refugees coming over here," Goodwill Industries President John Watson said. About 80 people, some transported by city bus, went to West High School, including several dozen youngsters from day-care centers. The kids remained there after the evacuation so parents would know where to pick them up.

Jan Lemon, 2216 California Ave., said she has lived near Iowa City's southeast industrial area 12 years but never has worried about a chemical accident. When her workplace, Tru Art Color Graphics, which is part of the Bankers Advertising facility at 2800 Highway 6 East, was evacuated, she first rushed home to get her dog.



Handicapped workers are evacuated from Goodwill Industries and Systems Unlimited Tuesday.

"As far as I know, they were doing a great job" in handling the emergency, Lemon said. Chris Statler, who also works at Bankers Advertising Co. and lives nearby on Broadway Street, said he didn't see the acid cloud before leaving the area: "I realize there can be dangers nobody can see."

Gazette Johnson County Bureau Chief Lyle Muller contributed to this report.



Wednesday, July 22, 1999



Headquarters Contacts

- **Kevin Williams**

Team Leader, Communications Branch

• 301-415-1104 kxw@nrc.gov

- **Lisa Gibney**

Emergency Preparedness Specialist

• 301/415-8376; LAG1@nrc.gov