

**Preliminary National Wildland Fire Outlook**  
**National Interagency Fire Center**  
**Predictive Services Group**



**Issued: February 9, 2007**

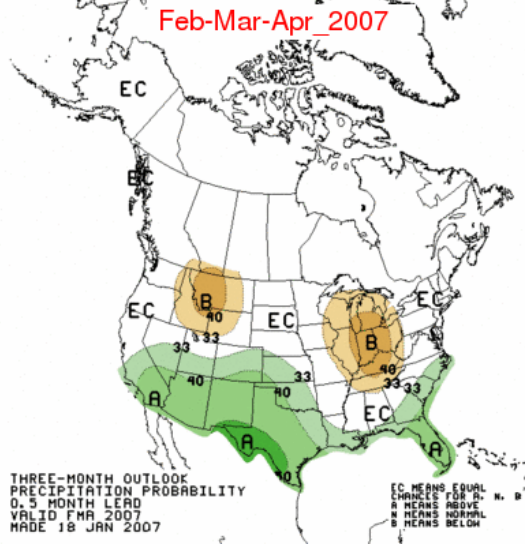
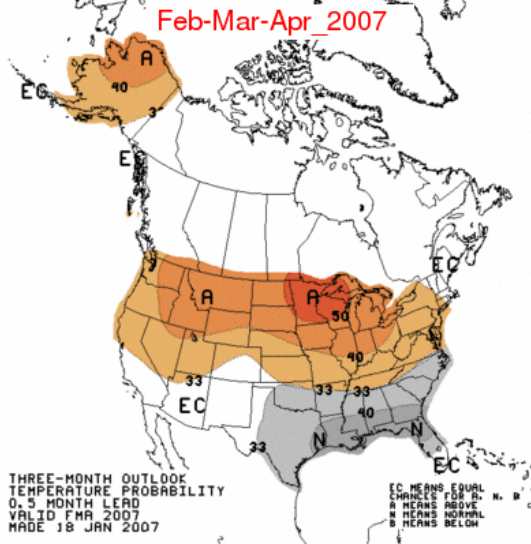
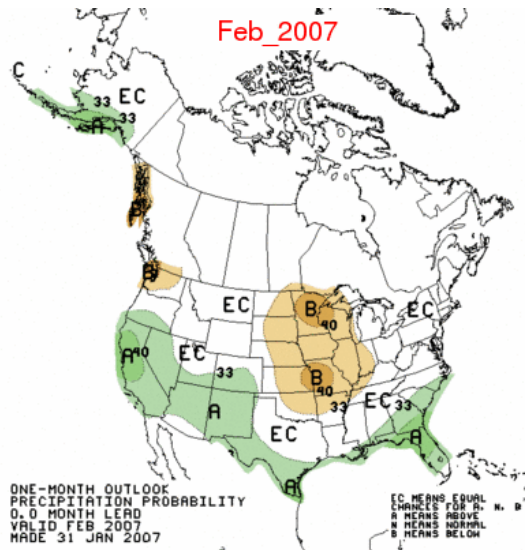
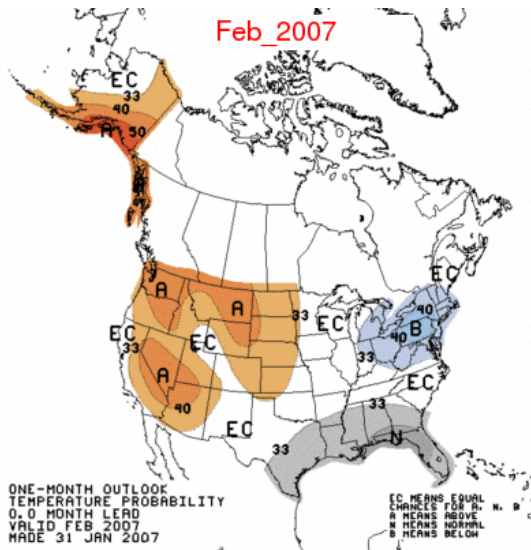
**Preliminary Wildland Fire Outlook – February through June, 2007**

**Significant Fire potential is expected to be higher than normal from the Pacific Northwest to the western Great Lakes, southern California, western Arizona and portions of the Southeast.** Fire season potential is shaped by a number of factors, including snowpack, the timing of spring snowmelt, rainfall, temperatures and drought. The most critical factors influencing fire potential this outlook period are:

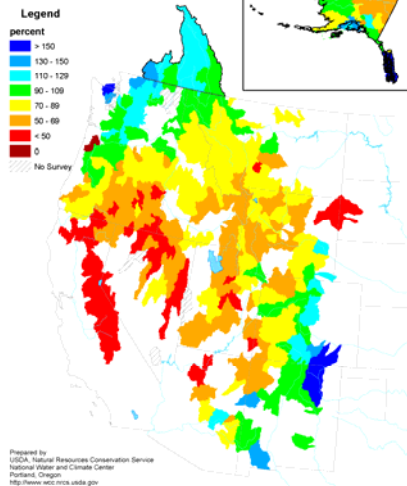
- El Niño is weakening but is still expected to impact late winter and early spring weather. These impacts include wetter than normal weather over the southern tier of states and above normal temperatures across the northern U.S.
- Current drought conditions across portions of Wyoming, and the Northern Rockies eastward to the Great Lakes are forecast to persist and elevate fire potential.
- As of February 1, snowpack is generally below normal across most of the West. While snowpack amounts should improve in California during February, Idaho and Montana will likely see continued below normal snowpack through spring.
- Dry winter conditions in Southern California and western Arizona followed by a wet spring is expected to increase fine fuel loadings and fire potential.
- Current drought and fuel conditions in Oklahoma and Texas are much improved compared to last season; thus, normal to below normal fire potential is predicted for these areas.



# Weather

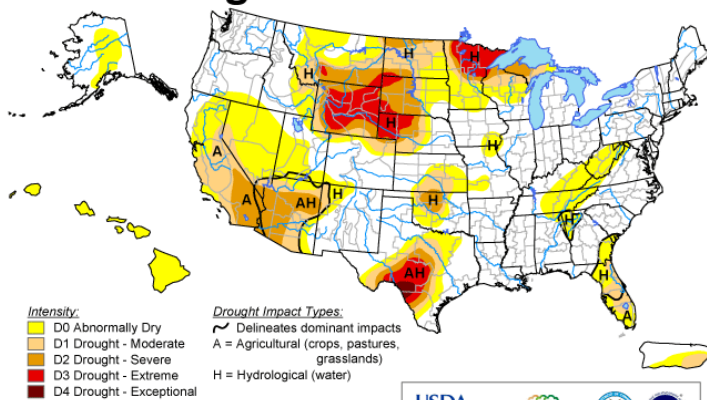


**Mountain Snowpack as of February 1, 2007**



## U.S. Drought Monitor

February 6, 2007  
Valid 7 a.m. EST



The Drought Monitor focuses on broad-scale conditions. Local conditions may vary. See accompanying text summary for forecast statements.

<http://drought.unl.edu/dm>



Released Thursday, February 8, 2007

Author: Mark Svoboda, National Drought Mitigation Center