

Parkers Chapel School District

Pandemic Flu Plan

September 2007

Table of Content

INFLUENZA PANDEMIC	3
Prevention/Education	10
Medical Supply List	11
Closure of Schools (Pandemic)	12
Closure of Schools (Seasonal Flu)	13
Disinfecting School Campus	14
Flu Precautions	14

Parkers Chapel School District Pandemic Flu Plan

In the event of a Pandemic Flu out break or a severe seasonal flu the Superintendent of the school district will be responsible in activating the “Pandemic Flu Plan.”

Superintendent: John Gross

Other: June Wells

Other: (School Nurses) Ruby McDiarmid & Jill Gilreath

Other:(Principals) Mike LaRue & Jana Young

INFLUENZA PANDEMIC

I. INTRODUCTION

A global outbreak of a new strain of human influenza is an influenza pandemic; such an event is inevitable, but the timing and the severity of the pandemic cannot be predicted. Union County Influenza Plan describes how this county will prepare for and respond to an influenza pandemic.

Influenza A, a contagious viral respiratory disease, causes widespread infection in all age groups every year. Influenza A viruses has infected many different animals including ducks, chickens, pigs, whales, horses, and seals. Influenza viruses normally seen in one species can sometimes cross over and cause illness in another species. This creates the possibility that a new virus will develop, either through mutation or mixing of individual viruses, in turn creating the possibility for new viral strains that can be highly infective, readily transmissible, and highly lethal in humans. Influenza pandemics occurred three times in the 20th century (1918, 1957, and 1968). Over 500,000 deaths occurred in the U.S. in the 1918 pandemic, while in 1968, an estimated 34,000 U.S. citizens died.

II. PURPOSE

This plan has been prepared to assist the school district in collaboration with Union County to better respond to the threat of an influenza pandemic.

The provisions of this plan constitute general guidance to mitigate the widespread illness regarding school aged children during an influenza pandemic. Additional information on Arkansas's public health response to an influenza pandemic is in the *Arkansas Influenza Pandemic Response Plan* developed by the Division of Health, Arkansas Department of Health and Human Services.

Provisions of this plan are not intended to supersede or negate the provisions of any annex or other appendix to the state and county plans.

III. SITUATION

Residents of Union County and children in this school district are vulnerable to an influenza pandemic disaster, which could result in a need for augmentation of health protection and surveillance activities, as well as medical services support.

Influenza viruses are unique in their ability to cause sudden, severe infection in all age groups on a global scale. Pandemic influenza would affect a population in phases. The first phase to affect a local community would likely appear quickly, with a relatively short incubation period, a high disease transmission rate, and affect a large segment of the population, with potentially high fatalities. It is likely that there would not be an effective vaccine immediately, nor would there be enough effective antiviral medication to treat an entire population. The second phase of the disease would likely be sometime later (up to a year). During the second phase, a vaccine may or may not be available. With a limited amount of medication to treat affected populations, it is necessary to establish policies and protocols to reduce morbidity and mortality and to protect the critical infrastructure of a community and assure continuity of operations.

As the pandemic develops, the World Health Organization (WHO) will notify the Centers for Disease Control and Prevention (CDC) and other national health agencies on the progress of the pandemic. CDC will communicate with state and territorial health agencies about pandemic states, information about the virus, vaccine availability, recommendations for prioritizing vaccine and antiviral/antibiotics, national response coordination and other recommended strategies for pandemic detection, control and response.

To effectively protect a population from the worst-case scenario, it will be necessary to ensure that essential services of the community continue to function. If the critical infrastructure fails in the first phase of a pandemic, it will be impossible to protect the remaining population.

The responsibility for management of the risk from pandemic influenza, should it actually occur, rests primarily with state and local government in cooperation with national authorities.

IV. ASSUMPTIONS

The Union County Local Health Unit is the lead agency for responding to pandemic influenza within the Union County. The school district will follow the lead of state and local government.

A pandemic is a public health emergency with political, social, and economic dimensions; it is likely to affect everyone in the county.

The entire population will be at risk of illness from a new type of influenza.

The clinical disease attack rate could be 35% in the overall population.

Of those who become ill with influenza, 50% may seek outpatient medical care.

Risk groups for severe infections cannot be completely predicted ahead of time; the elderly, the very young, and those with compromised immune systems are likely to be at high risk.

For seasonal influenza, the typical incubation period (the time between acquiring the infection until becoming ill) is 1-3 days. This plan assumes the same incubation period for a new strain of influenza.

People who become ill may transmit the virus 1-2 days before the onset of symptoms.

Outbreaks are expected to occur simultaneously throughout much of the United States, limiting mutual aid and material resources that normally occurs with other natural disasters.

During a pandemic, neighboring communities will be similarly affected, thus limiting mutual aid between communities. Each community will need to plan for self-sufficiency.

In an affected community, a pandemic outbreak may last six to eight weeks. Illness is expected to occur in distinct outbreaks or “waves” separated by weeks to months, lasting up to 18 months.

Vaccine is not expected to be available in large quantities at the onset of a pandemic.

Pharmaceuticals, especially influenza antiviral drugs and antibiotics to treat secondary infections, will likely be in short supply.

Planning for the continuity of government and private business operations is an essential component of preparedness. This plan assumes that continuity planning has occurred in both public and private sectors. It also assumes that a roster of essential personnel has been developed.

V. CONCEPT OF OPERATIONS

The response to an influenza pandemic will comply with the National Incident Management System (NIMS) provisions, including the use of an Incident Command System (ICS). The local incident command structure will need to interact effectively internally, with the Arkansas State Emergency Operations Center, with the Department of Health and Human Services Emergency Operations Center, and with other city and county response organizations.

The Union County Local Health Unit has the responsibility for implementing the pandemic influenza response at the local level appropriate to the specific phase of the pandemic as described in the *Arkansas Influenza Pandemic Response Plan*.

The Union County Emergency Operations Center (EOC) will be activated as appropriate.

At least two types of coordination will be needed between the local jurisdiction and the State of Arkansas. First, requests for resources (material or personnel) will flow from the Union County EOC to the State EOC as described in the Arkansas State Emergency Management Plan.

Second, there will be an on-going need for high-level coordination of communication, exchange of information, and public health decision-making between the state Division of Health and local health units.

VI. ORGANIZATION AND RESPONSIBILITIES

The official Emergency Operations Liaison for Union County in an influenza pandemic is Susan Blake, Administrator from the Union County Local Health Unit of the Arkansas Department of Health and Human Services.

The Union County Local Health Unit provides public health services for citizens of the county. During an influenza pandemic, day-to-day operations may be suspended to concentrate resources on critical health protection activities.

Priorities for vaccine and antiviral drug use will vary based on pandemic severity as well as the vaccine and drug supply. In settings of very limited vaccine and drug supply, narrow targeting and efficient use are required.

The State of Arkansas is developing guidelines and defining groups that will receive priority access to scarce medical countermeasures for local governments and the private sector. Union County will follow these guidelines. Priority recommendations will reflect the pandemic response goals of limiting transmission; limiting morbidity and severe mortality; maintaining critical infrastructure and societal function; diminishing economic impacts; and maintaining national security. In the early phases of a pandemic, antiviral prophylaxis of household contacts of infected individuals and vaccination of children may decrease disease spread in affected communities. If supplies and public health resources are sufficient, these strategies may be pursued in certain settings.

Local Mass Dispensing Plans may be activated based upon the *Arkansas Influenza Pandemic Response Plan*.

The Union County Local Health Unit, in coordination with the physician appointed as Union County Health Officer, will:

- A. Provide health protection services as needed.
- B. Assess the health and medical needs of the Union County.
- C. Coordinate the use of activated health and medical volunteers.
- D. Coordinate the allocation of health and medical supplies and resources.
- E. Coordinate the implementation of non-medical disease control measures, such as isolation, quarantine and social distancing, as directed by the State Health Officer based upon the *Arkansas Influenza Pandemic Response Plan*.

The Union County Health Officer in coordination with the County Judge will initiate the development of a Medical Reserve Corps through the Area Health Education Center Program of the University of Arkansas for Medical Sciences, if feasible.

Medical Center of South Arkansas will provide care for the hospitalized ill. The hospital/medical center will maintain an up-to-date Influenza Pandemic Plan, which includes the role of all healthcare providers for surge capacity, within their Disaster Plan.

Triage will be designated at Medical Center of South Arkansas.

Union County Judge:

- A. Upon declaration of an emergency, will activate the Union County EOC.
- B. Will work hand-in-hand with the Union County Public Information Officer (PIO), Union County Emergency Management Director, and Local Public Health Representative, assessing the influenza pandemic situation and offering direction and control of Union County assets and resources.
- C. Will participate in the development of a Medical Reserve Corps in coordination with the Area Health Education Center Program of the University of Arkansas for Medical Sciences.

Union County Office of Emergency Management (OEM):

- A. Assist in coordinating efforts and utilization of resources.
- B. Assure communication of information from affected partners to the State EOC and Local Emergency Planning Committee.
- C. Participate in assessing and mitigation during and after the influenza pandemic.
- D. Monitor the Plan and its effects on the community and redesign, if necessary, to develop a more effective preparedness plan.

Union County PIO Officer:

- A. During an influenza pandemic, the general public will demand information about the influenza and instructions on proper survival/response actions. The Union County PIO Officer by direction of the County Judge/Mayor and Office of Emergency Management Director will coordinate information and properly disseminate to the public via radio, newspaper, television or any other source that the public is familiar with. Health related information will be disseminated through the Division of Health EOC to local jurisdictions.
- B. The PIO will track necessary information to be able to respond to inquiries from family members about the status and location of loved ones.

South Arkansas Chapter of the American Red Cross:

Provide necessary assistance with provisions of food, transportation and other necessities.

Union County Ambulance Service

Union County Ambulance Service is the provider for the Union County and will transport the seriously ill.

Union County Law Enforcement:

- A. Will provide security for critical facilities and resources as identified by the County Judge/Mayor. Law Enforcement includes but is not limited to the Union County Sheriff's Department and the City Police Department.
- B. Will maintain law and order in a possible chaotic atmosphere.
- C. Transport necessary items to local residents and provide for health care worker safety and public safety.
- D. Provide movement and traffic control, re-establish law and order, and support other functional areas in the recovery operations.
- E. Follow established procedures for reporting appropriate information to the OEM during an influenza pandemic.

VII. AUTHORITIES AND REFERENCES

See the Health and Medical Annex in the County Emergency Operations Plan for further provisions on health and medical. The Health and Medical Annex should be adhered to in any health or medical crisis. This appendix is only to enhance and complement the existing annex.

See the *Arkansas Influenza Pandemic Response Plan* and www.pandemicflu.gov for more general information about Pandemic Flu.

PREVENTION

Education:

Staff: Year in-service and updates on...
Pandemic Flu/ Seasonal Flu
Hand washing/ Alcohol Gels
Disinfecting school
Flu Vaccine
Grief counseling workshops

Parents: Pamphlets/ Handouts on...
Pandemic Flu/ Seasonal Flu
Hand washing/ Alcohol Gels
Flu Vaccine

Students: Pamphlets/ Handouts on...
Pandemic Flu/ Seasonal Flu
Hand washing/ Alcohol Gels
Flu Vaccine

Teaching supplies for Staff: Posters, pamphlets, handouts, videos, Glow Germ Kit

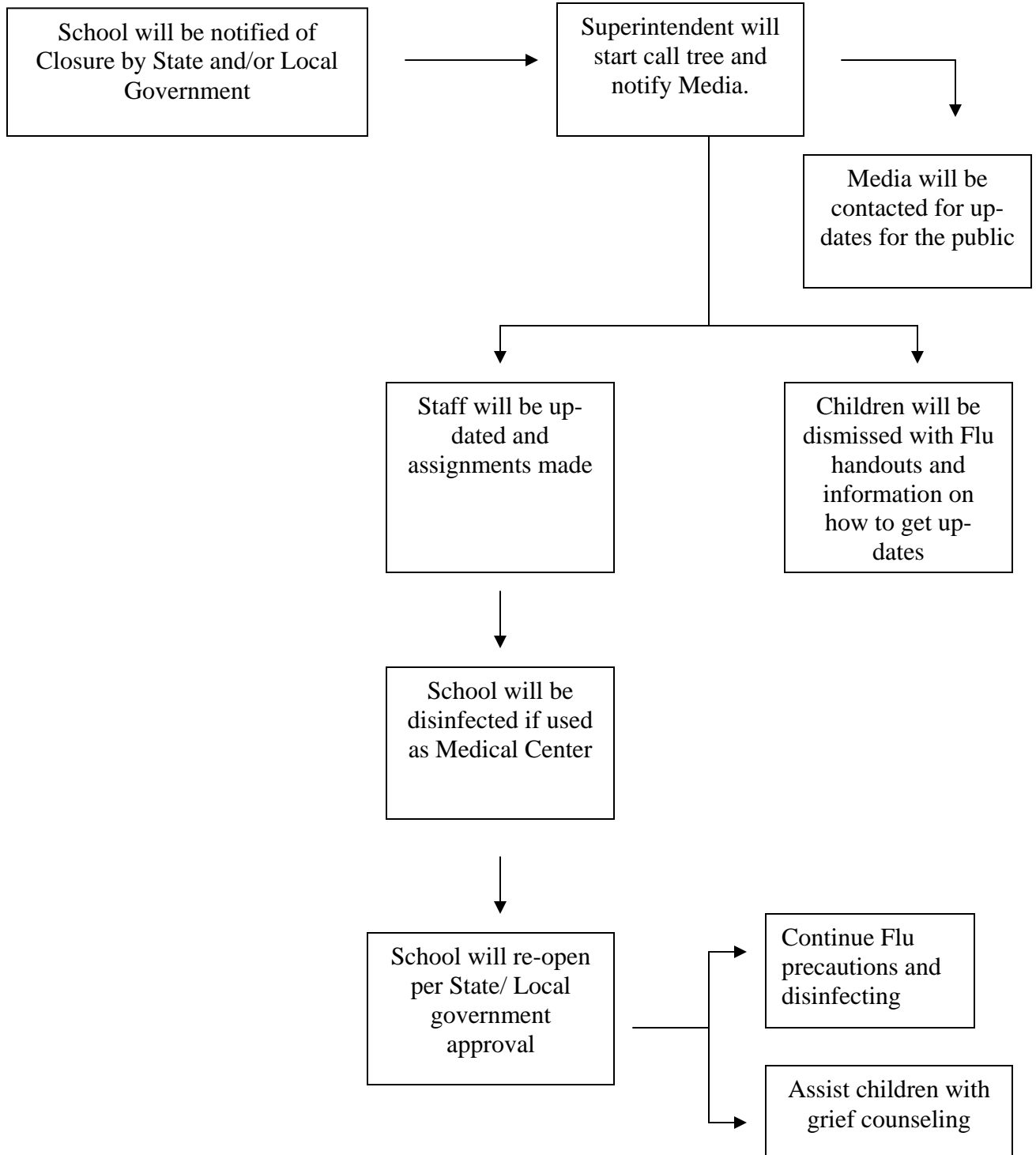
Medical Supplies:

- Alcohol wipes
- Band-Aids
- Gauze
- Gloves
- Biohazard bags/ containers
- Plastic trash bags
- Waste containers
- Hand sanitizers/soap/paper towels
- Lysol spray
- B/P cuffs/ stethoscopes
- PPE (personal protective equipment)
- Tongue depressors
- Pen lights
- Sharps containers
- Bleach solution
- Boxes of tissues
- Bleach sanitizing wipes
- Masks - N95 or surgical (for staff members)
- Medicine for fever

(These are suggested medical supplies to stockpile for an emergency)

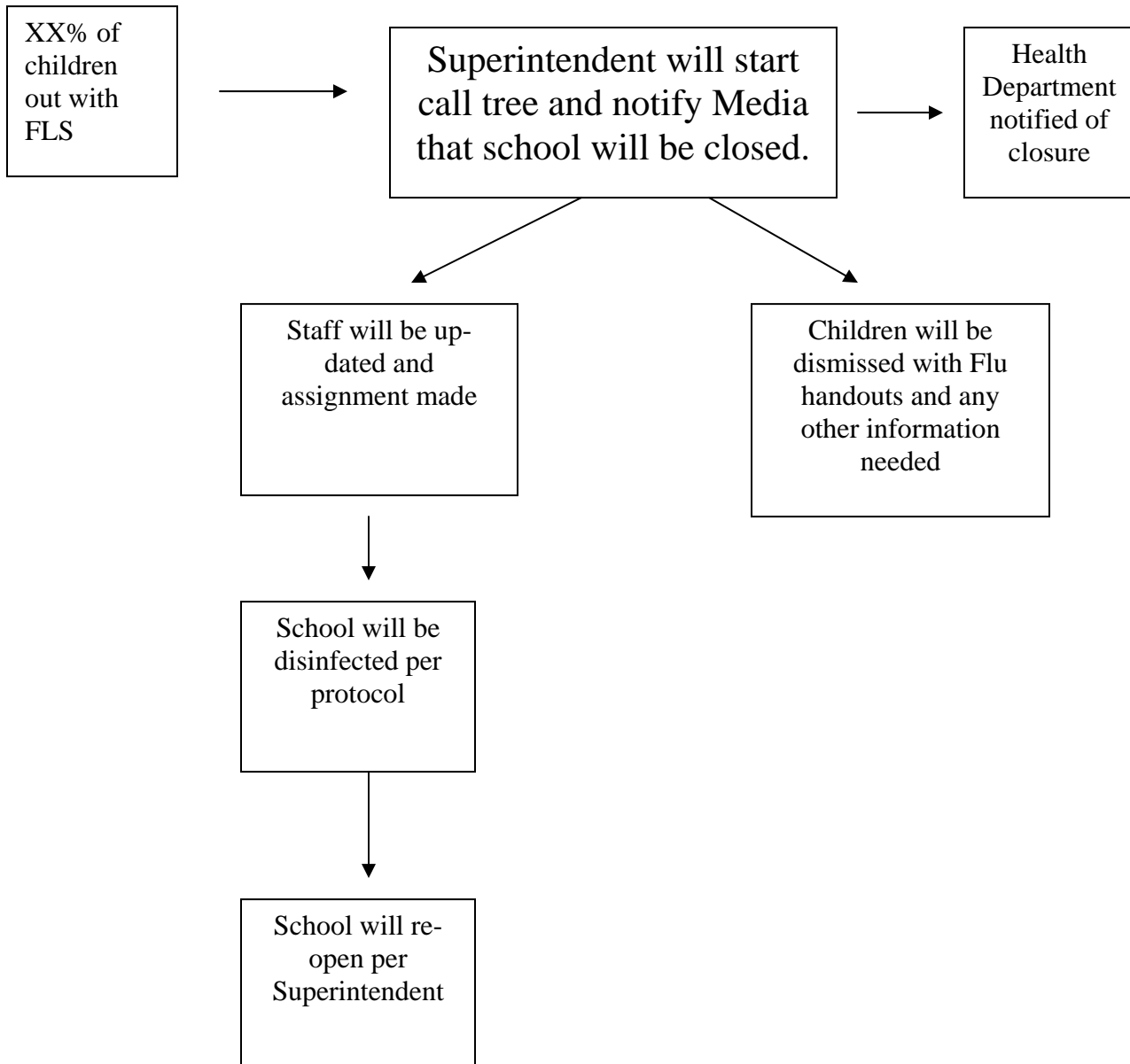
CLOSURE OF SCHOOLS

Closure of school during a pandemic flu outbreak will fall under the direction of the State and Local Government. At that time, the Superintendent will activate the Pandemic Flu plan.



CLOSURE OF SCHOOLS

Closure of school during a Severe Season flu outbreak will fall under the direction of the Superintendent.



Disinfecting School Campus

During flu season use a 10% bleach solution (1 part bleach to 9 or 10 parts water), let it air dry, it disinfects in 3 – 5 minutes, or use Lysol spray, bleach wipes, or other commercial cleaning product that will kill the flu virus.

Clean surfaces such as door handles, handrails, eating surfaces, desk, etc., with approved cleaning solution. Allow solution to sit 10 minutes on surface. (Clean surfaces frequently when children are present).

Follow blood borne pathogens precautions strictly.

Flu Precautions

Cough/Sneeze etiquette – use inside of elbow

Stay home if you have FLS – Flu like Symptoms

Hand washing frequently – 20 seconds with soap and water

Use hand gel if water/soap not available

Avoid touching eyes, nose, and mouth

Avoid close contact with sick people (3 – 6 foot rule)

Get flu vaccine

Be aware of FLS: Fever, headache, chills, body aches, tiredness, dry cough, sore throat, nasal congestion, and nausea and vomiting (in children).