



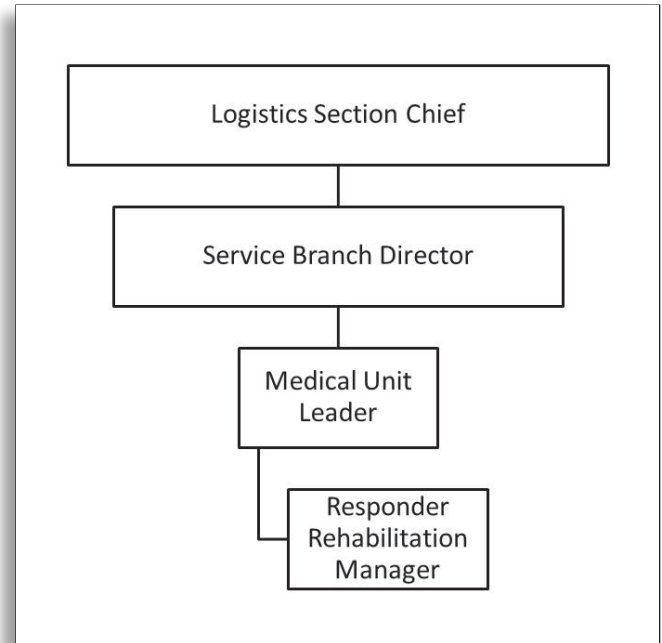
## Characteristics of the Medical Components of the Incident Command System: Responder Rehabilitation Manager

No. EMS-2014-2 July 2, 2014

**Learning Objective:** The student will be able to understand the Responder Rehabilitation Manager's responsibilities.

**R**ESPONDER REHABILITATION MANAGER –  
The Responder Rehabilitation Manager reports to the Medical Unit Leader and is responsible for the rehabilitation of incident personnel who are suffering from the effects of strenuous work and/or extreme conditions:

- a. Review Common Responsibilities (Page 1-2).
- b. Designate responder rehabilitation location and have location announced on radio with radio designation "Rehab."
- c. Request necessary medical personnel to evaluate medical condition of personnel being rehabilitated.
- d. Request necessary resources for rehabilitation of personnel, e.g., water, juice, personnel.
- e. Request through Food Unit or Logistics Section Chief feeding as necessary for personnel being rehabilitated.
- f. Release rehabilitated personnel to Operations Section or Planning Section for reassignment.
- g. Maintain appropriate records and documentation.
- h. Maintain Unit/Activity Log (ICS Form 214).



For additional information regarding the Responder Rehabilitation Manager's responsibilities, the U.S. Fire Administration/National Fire Academy Field Operations Guide can be accessed at <http://feti.lsu.edu/municipal/NFA/TRADE/materials/TRADE%20CD%20XVI//WebHelp/index.htm>.