

Automated Commercial Environment Overview and Status Update



U.S. Customs and
Border Protection

June 2012



Agenda

ACE/ITDS

ACE Timeline

Project Priorities

ACE Program Successes

Current Capabilities

- ESAR Functionality
- CCR Functionality

ACE Priorities/Planned Capabilities

Additional Resources



ACE

- Modernizes commercial trade processing systems with features designed to consolidate and automate border processing to include other federal agencies with a border presence
- Provides a single centralized access point to connect CBP, Participating Government Agencies (PGAs), and the trade
- Supports CBP border security and trade facilitation mission
- Forms backbone of CBP trade processing and risk assessment capability with the Automated Targeting System (ATS)
- Interfaces with and consolidates information from the following systems via the ACE Secure Data Portal: ATS, TECS (Treasury Enforcement Communication System), FAST (Free and Secure Trade), and ACS (Automated Commercial System)
- Facilitates collection and distribution of standard electronic import and export data required by all Federal agencies via International Trade Data System (ITDS) initiative



International Trade Data System



- **Vision:**
 - **Single window filing:** A single place for the trade community to submit data required by all Federal agencies for the clearance of cargo
 - **Inter-agency data sharing:** Dissemination of international trade and transportation data to all federal agencies involved in import, export, and transportation-related decision making
- **Support:**
 - **The Security and Accountability for Every Port Act of 2006** officially established the ITDS initiative under the Department of the Treasury and mandated agencies involved in licensing and admissibility to join ITDS
 - **Office of Management and Budget Directive M-07-23** mandated that agencies appoint senior executives to an interagency ITDS coordination team
 - **President's Management Agenda, E-Government Scorecard** mandated integration of agency operations and IT investments
- 47 International Trade Data System Participating Government Agencies (PGAs), including:
 - Animal and Plant Health Inspection Service
 - U.S. Coast Guard
 - Environmental Protection Agency
- More than 590 ACE portal end users from 29 PGAs
- Import and Export missions include security, admissibility, and statistics
- PGAs are helping formulate the requirements for the future of cargo release



PGAs in ITDS

Department of Agriculture

AMS – Agricultural Marketing Service
APHIS – Animal and Plant Health Inspection Service
FAS – Foreign Agricultural Service
FSIS – Food Safety and Inspection Service
GIPSA – Grain Inspection, Packers & Stockyards Administration

Department of Commerce

BIS – Bureau of Industry and Security
U.S. Census Bureau
FTZB – Foreign Trade Zones Board
IA – Import Administration
NMFS – National Marine Fisheries Service

Department of Defense

USACE – Army Corps of Engineers
DCMA – Defense Contracts Management Agency

Department of Energy

OFE – Office of Fossil Energy
EIA – Energy Information Administration
OGC – Office of General Counsel

Department of Justice

ATF – Bureau of Alcohol, Tobacco, Firearms and Explosives
DEA – Drug Enforcement Administration

Department of the Interior

FWS – Fish and Wildlife Service

Department of Labor

BLS – Bureau of Labor Statistics

Department of Homeland Security

USCG – United States Coast Guard
CBP – Customs and Border Protection
TSA – Transportation Security Administration

Department of Transportation

BTS – Bureau of Transportation Statistics
FAA – Federal Aviation Administration
FHA – Federal Highway Administration
FMCSA – Federal Motor Carrier Safety Administration
MARAD – Maritime Administration
NHTSA – National Highway Traffic Safety Administration
PHMSA – Pipeline Hazardous Materials Safety Administration

Department of Health and Human Services

CDC – Centers for Disease Control and Prevention
FDA – Food and Drug Administration

Department of Treasury

IRS – Internal Revenue Service
OFAC – Office of Foreign Assets Control
TTB – Alcohol and Tobacco Tax and Trade Bureau
FinCEN – Financial Crimes Enforcement Network

Department of State

A/LM – Bureau of Administration, Office of Logistics Management
DDTC – Directorate of Defense Trade Controls
OES/OCM – Bureau of Ocean and International Scientific Affairs
OFM – Office of Foreign Missions

Independent Agencies

CPSC – Consumer Product Safety Commission
EPA – Environmental Protection Agency
FCC – Federal Communications Commission
FMC – Federal Maritime Commission
ITC – International Trade Commission
NRC – Nuclear Regulatory Commission
USAID – U.S. Agency for International Development
USTR Office of the United States Trade Representative



Summarized ACE Timeline

	2003	2004	2005	2006	2007	2008	2009	2010	2011	2012	Future
Manifest		Initial Deployment of Truck Manifest	Port Rollout of Truck Manifest	Port Rollout of Truck Manifest	Port Rollout of Truck Manifest	Mandatory filing of Truck Manifest			Initiation of Rail and Sea Manifest Deployment ISF Low Volume Filings	Completion of Rail and Sea Manifest Deployment Development of Export Manifest Requirements	Export Manifest Air Manifest Multi-Modal Manifest
Release & Post Release							Entry Summary Filing (Types 01 and 11)	AD/CVD Entry Summary Filing (Type 03) and Case Management	Post Summary Correction Filing	Initiation of Cargo Release Development PGA Message Set And ITDS Document Image System	Additional Entry Summary Types Remote Location Filing Reconciliation Protest, Liquidation, Drawback
Accounts	ACE Secure Data Portal for Initial 41 Importer Accounts	Periodic Monthly Statement Initial Broker and Carrier Accounts			Creation and Maintenance of Master Data in ACE Additional Account Types Merge Accounts Capability Cross Account Access Broker Management	Ad Hoc Reports Authorized Data Extracts	Ability for Importers to Respond to CBP Forms 28, 29 and 4647 via ACE Portal and Create Declaration Records	Ability for Brokers to Create Declaration Records on Behalf of Non-Portal Accounts	ISF Reports Creation and Maintenance of In-Bond Authorization File Creation and Maintenance of Ocean Conveyances		e-Bond



ACE Project Priorities

Priority	Delivered	Remaining
----------	-----------	-----------

Category	Priority Rank	Functionality
Manifest		ACE e-Manifest: Truck
	1	Continued deployment of ACE e-Manifest: Rail & Sea
		Air Manifest
		Integration of Multi-Modal Manifest
		Vessel Management System
Cargo Release	2A	Simplified Entry, Phase I
	2B	Document Image System
	2C	PGA Message Set
	2D	PGA Interoperability
	2E	Future Phases of Simplified Entry
Entry Summary		ACE Accounts and Reports
		Periodic Monthly Statement
		Entry Summary (Type 01 and 11)
		Antidumping/Countervailing Duty Entries (Type 03)
		Post Summary Corrections
	3	Entry Summary Edits
		Remaining Entry Summary Types



ACE Project Priorities

Priority	Delivered	Remaining
----------	-----------	-----------

Category	Priority Rank	Functionality
Entry Summary		Mail Entry Writing System
		Importer Activity Summary Statement (Simplified Summary)
		Drawback
		Reconciliation
		Protest
		Entry Liquidation
Exports	5	Exports
Financial		Integration of all financial capabilities in ACE
Operations and Maintenance	4	Priority fixes (Problem Reports)
		Ongoing fixes and enhancements
		ACS re-hosting
		AES re-hosting
		Reducing O&M costs
		Transition to target architecture
		SEI assessment and integration planning
Other		System Migration (LIMS, SEACATS, etc.)



ACE Program Successes and Current Capabilities

- Periodic Monthly Statement
- Enhanced ACE Reports
- Entry Summary Account and Revenue
 - ACE Entry Summary Types 01, 03, & 11
 - Post Summary Corrections
 - AD/CVD Cases and Messages
 - Electronic CBP Forms
 - Document Image System (DIS)
- Cargo Control and Release
 - e-Manifest: Truck
 - e-Manifest: Rail and Sea
 - Importer Security Filing





Entry Summary Accounts and Revenue Functionality

ACE Entry Summary Functionality Highlights

ACE Entry Summary Processing

For entry types 01, 03, and 11

CBP Forms

Respond to CBP Forms 28, 29, and 4647 through the ACE portal for all entry summaries

Processing for Post Entry Summary Documents

Respond through the portal to a post summary request for documents for an ACE entry summary



ACE Entry Summary Functionality Highlights (cont)

Blanket Declarations

Post blanket declaration records through the ACE portal for CBP to view nationwide

Census Warning Processing

Electronically correct Census warnings through the submission of an override code for ACE entry summaries prior to or after receiving a Census warning message through ABI

AD/CVD Cases and Messages

Search, display and print AD/CVD cases and messages

ACE Entry Summary Functionality Highlights (cont)

Post Summary Corrections

Electronic corrections to ACE Consumption and Antidumping/Countervailing Duty entry summaries

Document Image System

Capability for trade members to supply required documentation to federal agencies electronically
ACE Entry Summaries, including entry summaries certified for release

Periodic Monthly Statement

Pay duties and fees on the 15th working day of the following month

ACE Reports

Multiple reports for importers, brokers, and carriers



CBP Forms 28, 29, and 4647

CBP Forms 28 (Request for Information), 29 (Notice of Action) and 4647 (Notice to Mark and/or Notice to Redeliver) are created by CBP and posted to the Trade's Task List

CBP can use U.S Postal Service "snail mail" and post to Trade's ACE Portal

Trade Portal Users can interactively respond to the form and attach/upload documents in response to CBP via the Portal

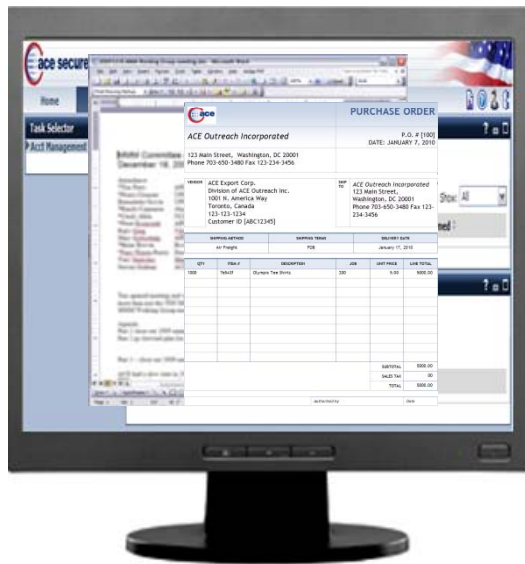
Trade Portal Users can select the ACE Portal, the U.S. Postal Service, or both, as their preferred method of communication

The image shows a sample of CBP Form 28, 'Request for Information'. The form is titled 'DEPARTMENT OF HOMELAND SECURITY U.S. Customs and Border Protection REQUEST FOR INFORMATION (CBP 2811)'. It includes fields for 'To: Director, CBP', 'From: [redacted]', 'Subject: [redacted]', and 'Date: [redacted]'. The form is divided into several sections, including 'Administrative Use Only', 'Requester Information', and 'Requester's Response'. The 'Requester's Response' section contains a large text area for providing information and a section for 'Requester's Contact Information'. The form is filled with redacted information, indicated by black boxes.

Sending Documents Via the ACE Portal

Filer receives request for Post Summary documents via ABI which includes an “Action Number”

Filer responds via the ACE Portal by attaching an electronic version of the document requested



Preferred formats include:

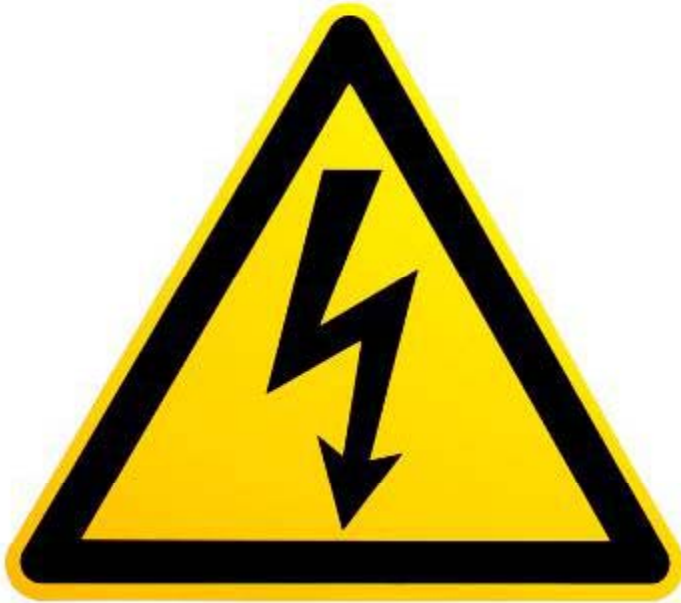
CSV	Comma Separated File
DOC	Microsoft Word Application
GIF	Graphics Interchange Format
JPG	Joint Photographic Group
PDF	Portable Document Format
PPT	Microsoft PowerPoint
TIF	Tag Image File Format
TXT	Text Format
XLS	Microsoft Excel



Census Warning Processing

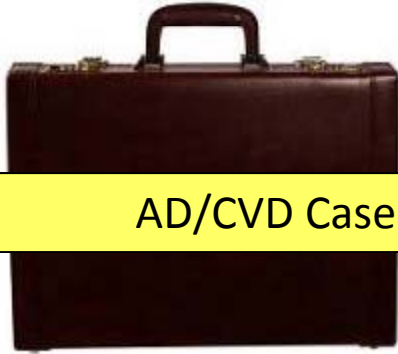
Correct Census Warnings electronically on ACE entry summaries (types 01, 03 or 11) through the transmission of an override code.

Example scenarios are:



- If you know that a Census warning will be generated for the entry summary/line item, you will be able to do a preemptive Census override when filing the entry summary.
- If you receive a Census warning due to an error in reporting, you will be able to fix the entry summary/line item and then report the Census override code if needed.
- If you file the entry summary and receive a Census warning but you know the data is correct, you will be able to send the Census override code.

AD/CVD Case Management



AD/CVD Case

- Available via ACE Portal and ABI
- Search, display and print via the Portal
- New ABI AD/CVD Case Query
- Expansion of data contained within the case
 - Reference to associated AD/CVD messages
 - Expanded Event Lifecycle Log
 - Inclusion of specific duty rates
 - Entry Summary Suspension
 - Administrative Review Periods
 - Parties affected by the AD/CVD Case
 - Official Case Name Detailed



AD/CVD Messages

- Available via CBP.gov website
- Search, display and print via the Portal
- Expansion of the data within the messages
- Expanded message types and categories will more accurately reflect the action taken
- Messages available on the Portal
- Company details



Post Summary Corrections

The Post Summary Correction (PSC) transaction:

- Fully replaces the existing ACE entry summary as a new version
- May be submitted for ACE entry summaries, types 01 and 03 only
- Replaces the existing Post Entry Amendment (PEA) hardcopy process for ACE entry summaries
- Provides the ability for the trade to submit corrections to ACE entry summaries via Electronic Data Interchange (EDI)
- Is processed through all existing validations including Census warnings
- May be subject to team review



Document Image System

- DIS facilitates the automated submission of CBP and Participating Government Agency (PGA) forms and supporting information
- Documents will be stored in the DIS and made available to CBP and the PGA users to review, comment, and update status to Received, Pending, Accepted, or Rejected
- The Federal Register Notice published on April 6, authorizes the test for Trade to submit scanned documents via DIS
- Two PGAs, Environmental Protection Agency (EPA) and National Marine Fisheries Services (NMFS), have volunteered to join in the CBP pilot test of DIS in 2012
- Capabilities within DIS are available to ACE entry summary filers and for ACE entry summaries only, including ACE entry summaries certified for release

Document Image System (cont)

Benefits

- Initiates single window submissions from Trade to CBP/PGAs
- Provides CBP and PGAs with nationwide visibility to documents
- Provides document review status and report capabilities
- Provides a central repository for documents submitted by the trade
- Reduces time and cost surrounding paper processes

Status

- Monthly releases to support enhancements and expansion
- Trade Participation –Trade participants currently testing, contact Client Representative Branch for on-boarding procedures
- PGA Participation – Documents for EPA, APHIS, and NMFS deployed for DIS, discussions and requirements in progress with additional PGAs



DIS Forms Initially Supported

CBP	EPA	APHIS	NOAA/NMFS
Commercial Invoice	TSCA Import Certification Form	APHIS Ingredients List	NOAA 370 - Fisheries Certificate of Origin
Packing List	EPA Pesticide Label	APHIS Preclearance 203	Toothfish Pre-Approval Form
Invoice Worksheet	EPA 3520-21 – Importation of Motor Vehicles and Engines Subject to Fed Air Pollution Regs (off road)	APHIS Import Permit	
	EPA 3520-1 – Importation of Motor Vehicles and Engines Subject to Fed Air Pollution Regs (on road)	APHIS Phytosanitary Certificate	
	EPA 3540-1 – Notice of Arrival of Pesticides and Devices	APHIS Transit Permit	
	EPA Pre-approved Vehicle/Engine Exemption Letter	APHIS Notice of Arrival	



Periodic Monthly Statement

- Simplifies the processing of duties and fees by moving from a transaction-by-transaction payment process to an interest free periodic monthly statement process
- Allows all eligible shipments released during the month to be paid on the 15th working day of the following month
- Provides additional flexibility in the management of working capital required for duty payments
- Allows the filer to select either a national or a port statement
- Allows the broker to pay on behalf of the importer either on an importer or a broker statement
- Allows account to view the statement as it is being built



Key ACE Reports



Filer or Importer Quick Views

Entry Summary Aggregate and Detail Reports

- CBP Form 28, 29, 4647 Status Report

Periodic Monthly Statement Reports

- Periodic Statement Quick View – Broker
- Periodic Statement Quick View – Importer

Crossings by Drivers Report

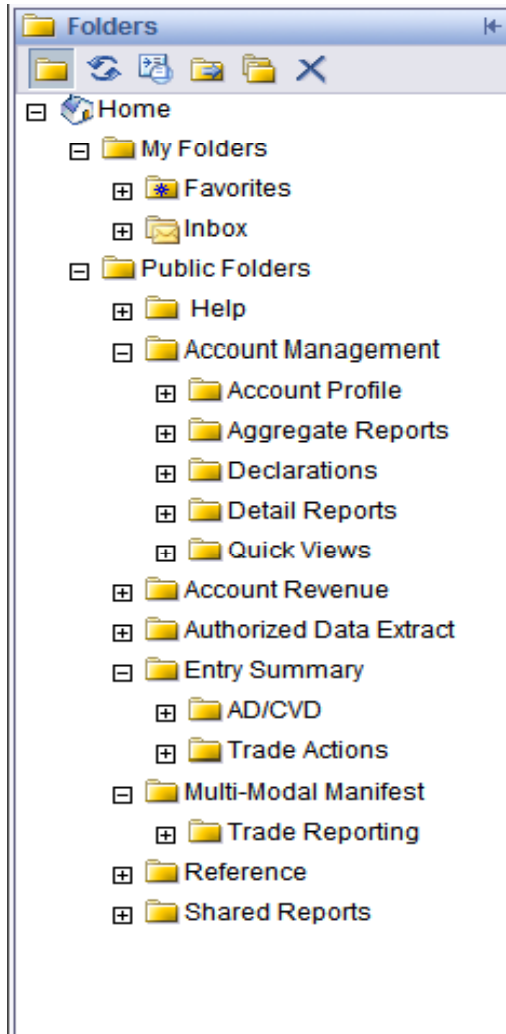
Multi-Modal Manifest Reports

- BOL Status Report
- In-Bond Details Report

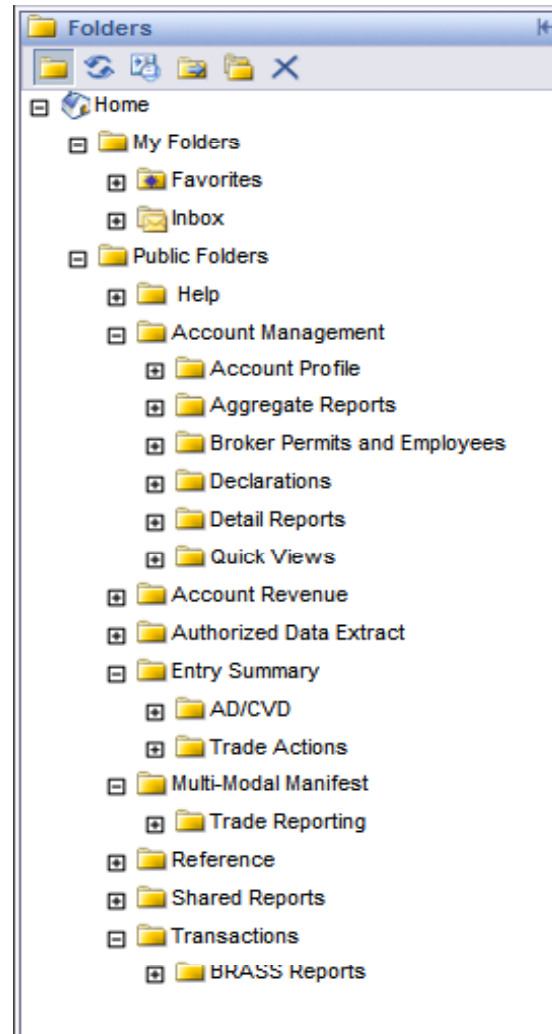


ACE Report Categories

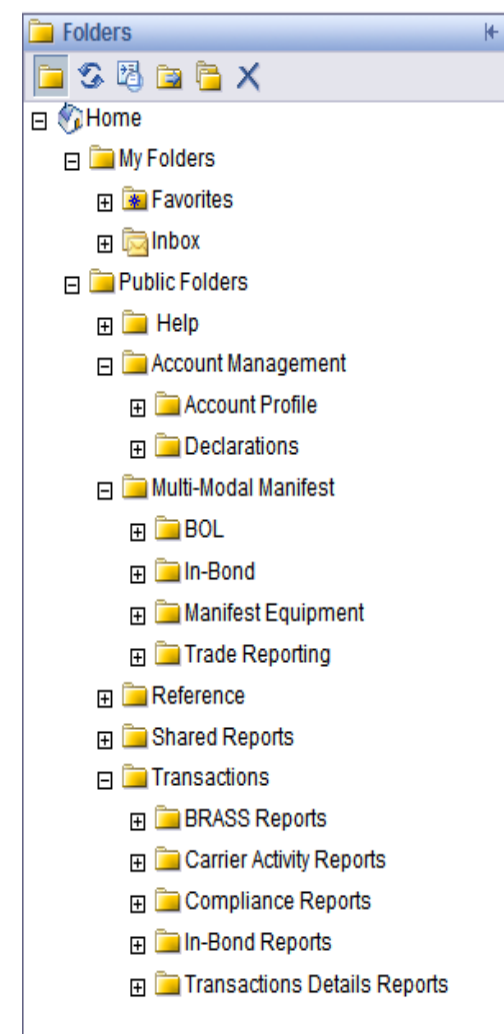
Importer



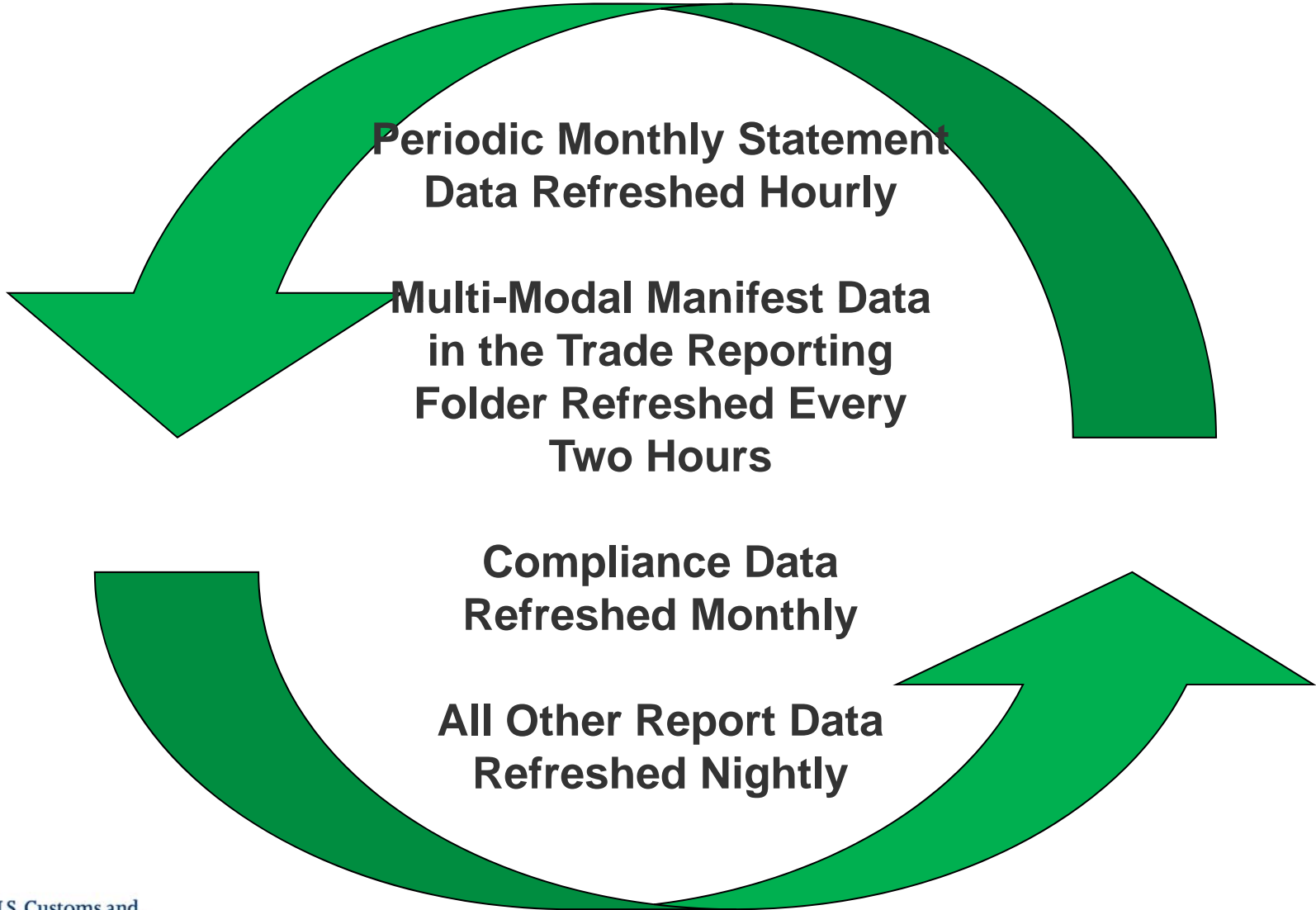
Broker



Carrier



ACE Reports Data Refresh





Cargo Control and Release

e-Manifest: Trucks

- Enables truck carriers to comply with advanced cargo rule
- Reduces processing times at ports and the likelihood that trucks will be released at primary booth
- Allows truck carriers to store conveyance, crew, equipment, shipper and consignee information in their ACE portal account when filing their manifest via the ACE Portal
- Allows truck carriers to track the status of their crew, conveyances, equipment and shipments
- Enables users to request in-bond moves directly from the manifest
- Sends copies of shipment records to the customhouse broker
- Allows users to create customizable reports



e-Manifest: Rail and Sea

- **New data elements, rules, and edits**

- Including validation of HTS, bonds, multiple Hazmat data elements, units of measure, and enhanced Permit to Transfer transactions

- **Enhanced functionality and improved procedures**

- Including broker downloads for sea cargo, notification of PGA holds, ease in process holds, and increases in the number of Secondary Notify Parties

- **Enhancements for rail and sea carriers**

- Including carrier authorization of custodial bonds, enhanced ACE Portal functionality, and access to carrier reports

- **Enhancements for importers and brokers**

- Including new reports for rail and sea shipments, broker download messages, and creation of rail line release entry banks



e-Manifest: Rail and Sea - Status

Date	Milestone
March 29, 2012	<p>Announcement via Federal Register Notice:</p> <ul style="list-style-type: none"> • ACE as the only CBP-approved electronic data interchange (EDI) through which rail and sea manifests may be transmitted • Six-month transitional period to allow for any remaining rail and sea filers to complete the transition to ACE before decommissioning rail and sea capabilities in the Automated Manifest System (AMS)
September 29, 2012	<p>Decommissioning of AMS for rail and sea manifest</p> <ul style="list-style-type: none"> • Transition to ACE for filing of all rail and sea manifests. • There are MANDATORY changes to functionality that impact ABI software developers and their users. These changes are found in ABI Application Identifiers QP and WP (In-Bond), BD (Broker Download), and NS (Status Notifications) • If the required programming changes are not made when this transition takes place on September 29, 2012, EDI messages for ocean and rail manifest and ABI in-bond transactions will fail



Importer Security Filing

Link from ACE Portal to Importer Security Filing (ISF) Portal

- ISF transaction filing capability for very low volume importers (limited to 12 or fewer filings per year)
- Progress reports available for importers, filers, and sureties
 - ACE Account, free of charge, required to access reports
 - Email Subscription was turned off on December 31, 2011
- Reports will be delivered once a month and should be available for viewing no later than the 10th calendar day of the following month
- To be deployed at later date
 - ISF status query
 - Bill of Lading status query
 - Reports for carriers
 - ISF transaction reporting capability for C-TPAT Tier 3 importers

ACE Functionality: Delivered March 2012



Ocean Export Manifest via DIS

- Pilot program started March 28, 2012 in eight ports
- Replaces physical paper documents with a readable PDF attachment to an email into DIS
- Participants will not have to present paper copies of CBP Form 1302A or Bills of Lading
- Interim step to the full development of an electronic manifest to replace current paper processes



ACE Functionality: Delivered May 2012



Simplified Entry

- First phase of Cargo Release delivered in ACE
- Streamline data elements required for release
- Receive data earlier in import life cycle, promoting trade facilitation
- Streamline processes and reduce administrative burden on filers
- Pilot started May 29, 2012 in three ports
- CBP working with trade pilot participants on next steps for Simplified Entry

ACE Functionality: Delivered May 2012

Simplified Entry

1. Filers will Submit a Streamlined Data Submission

Filers will submit a reduced amount of information—12 required and three optional data elements—prior to the arrival of the merchandise for transporting the cargo to the U.S.



2. Filers can Provide the Information in Advance

The simplified entry can be filed earlier in the import process, allowing an expanded window of opportunity to identify potential risks earlier.



3. Filers can Update the Data for Accuracy

It will also allow pilot participants to update entry information, providing CBP more accurate data and enhancing cargo security.

This simplifies the merchandise release process, allows for more streamlined electronic transmission for the filer, and assists importers in finalizing cargo movement logistics.



ACE Functionality: Delivered May 2012

Simplified Entry Data

Simplified Entry streamlines the data elements on CBP's 3461 entry form

- This promotes the concept of “the owner of the data knows the data best”, resulting in more accurate information
- The following Simplified Entry data set replaces the CBP 3461:

Importer of Record Number	Country of Origin	Ship to Party Name and Address (Optional)
Buyer Name and Address	Bill of Lading/House Airway Bill Number	Consolidator Name and Address (Optional)
Buyer EIN	Bill of Lading Issuer Code	Container Stuffing Location (Optional)
Seller Name and Address	Entry Number	
Manufacturer/Supplier Name and Address	Entry Type	
HTS 10-Digit Number	Estimated Shipment Value	



ACE Priorities/Planned Capabilities

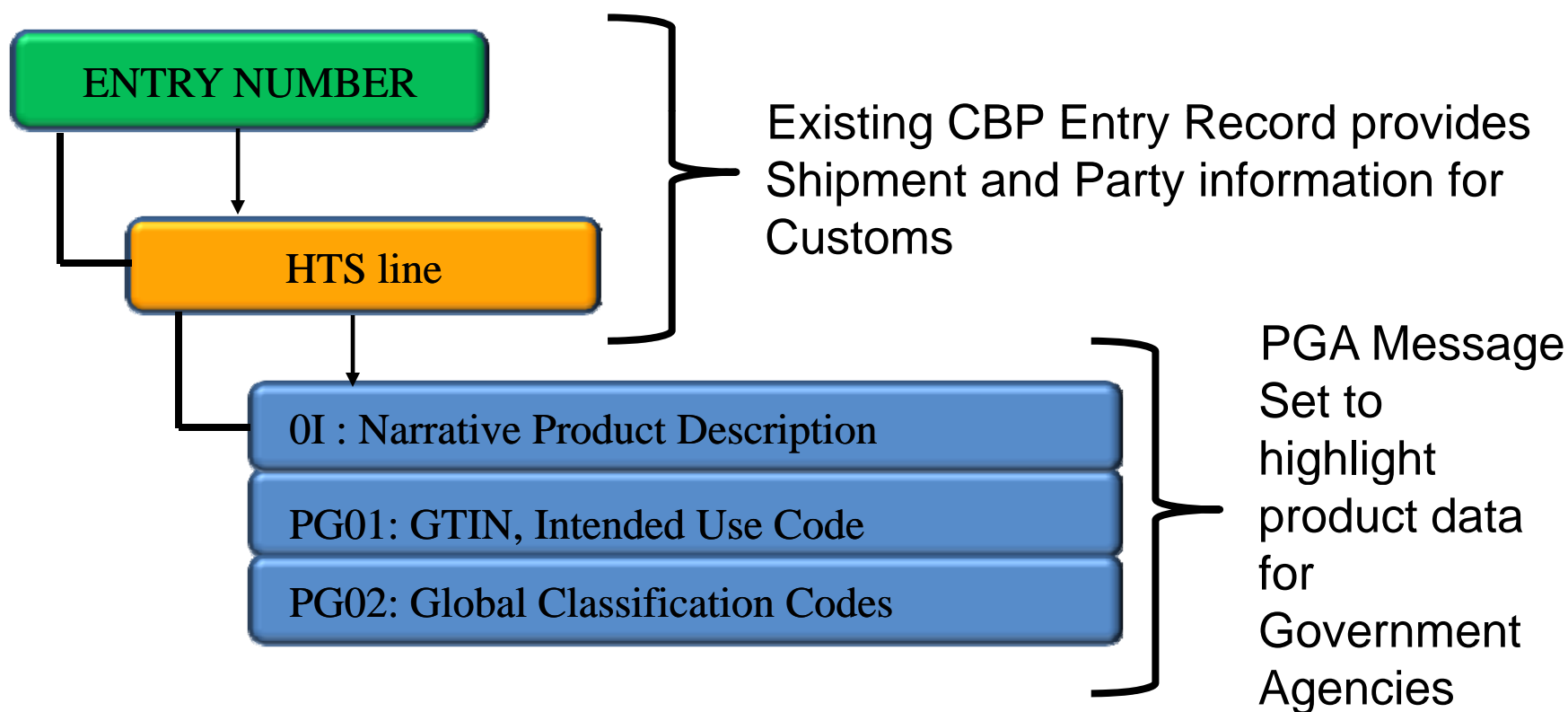
ITDS/PGA Message Set



- The International Trade Data System (ITDS) is the process through which the data needs of all Government agencies with a role in the admissibility of cargo and trade facilitation will be incorporated into ACE
- Single set of information electronically collected for CBP and PGAs
- Allow for quicker release decisions by CBP and PGAs
- Result in a single window for filing of documents required by the PGAs
- Result in data sharing between PGAs
- Eliminate the need to file many of the paper forms required by PGAs

ITDS - PGA Message Set

Updated Automated Broker Interface records will relate currently reported data to the product data



ACE Priorities/Planned Capabilities



Additional entry types

Air Manifest

Drawback

E-Bond

Liquidation

Protest

Reconciliation

Remote Location Filing



Additional Resources

Portal Applications



Applications, instructions and tutorials can be found on CBP.gov/modernization

- Create the ACE top account
- Associate the primary ID#
- Create or add TAO or POC
- Confirmation sent to TAO or POC

Web Based Training



http://nemo.cbp.gov/ace_online

Cargo Systems Messaging Service

A subscription based, broadcast message system for users of CBP automated commercial trade system <http://apps.cbp.gov/csms/>



www.CBP.gov/Modernization



- ACE Fact Sheets
- Training and Reference Guides
- Federal Register Notices
- Presentations of Capabilities





U.S. Customs and Border Protection

For more information,
visit “ACE: Modernization Information Systems”
at www.cbp.gov/modernization
or send an e-mail to: CBP.CBPCSP0@dhs.gov