

# CRS Report for Congress

Received through the CRS Web

## U.S. National Science Foundation: An Overview

Christine M. Matthews  
Specialist in Science and Technology Policy  
Resources, Science, and Industry Division

### Summary

The National Science Foundation (NSF) was created by the National Science Foundation Act of 1950, as amended (P.L. 81-507). The NSF has the broad mission of supporting science and engineering in general and funding basic research across many disciplines. The agency provides support for investigator-initiated, merit-reviewed, competitively selected awards, state-of-the-art tools, and instrumentation and facilities. The majority of the research supported by the NSF is conducted at U.S. colleges and universities. Approximately 82.7% (\$3,052.5 million) of NSF's FY2004 \$3,689.9 million research and development (R&D) budget was awarded to U.S. colleges and universities.<sup>1</sup> Preliminary data reveal that for FY2004 the NSF provided approximately 58.7% of all federally funded **basic** research conducted at the nation's colleges and universities, with the exclusion of biomedical research sponsored by the National Institutes of Health. In addition, NSF provides more than 30% of the total federal support for science and mathematics education. This report will be updated periodically.

**Background.** The NSF's primary responsibility is to maintain the health and vitality of the U.S. academic science and engineering enterprise. In addition to ensuring the nation's supply of scientific and engineering personnel, the NSF promotes academic basic research and science and engineering education across many disciplines.<sup>2</sup> Other federal agencies, in contrast, support mission-specific research (i.e., health, agriculture, defense).

---

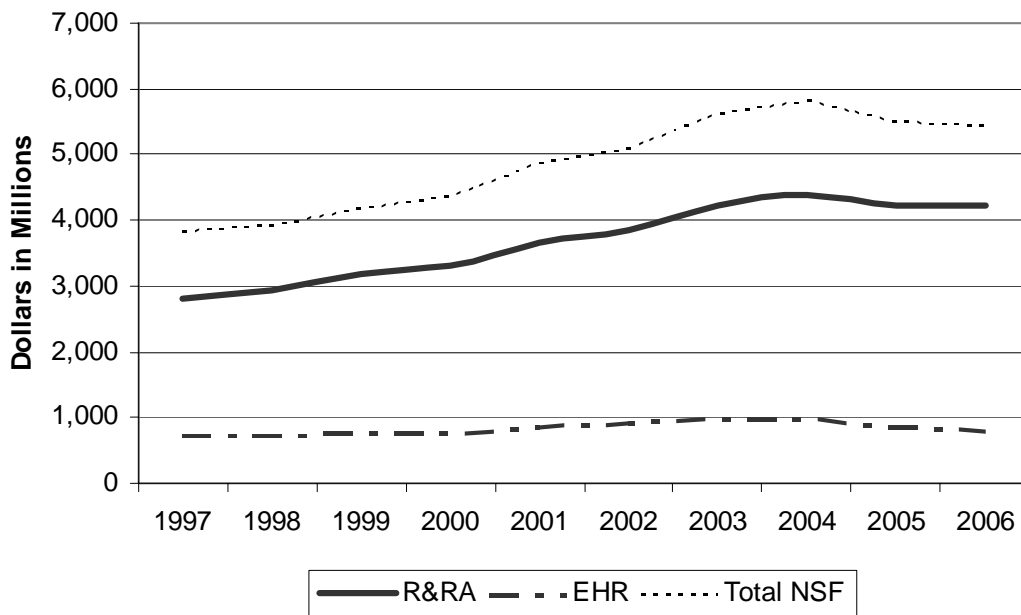
<sup>1</sup> National Science Foundation, *Federal Funds for Research and Development: Fiscal Years 2002, 2003, and 2004*, Detailed Statistical Tables, NSF05-307, Arlington, VA, February 2005, Table C-10.

<sup>2</sup> The NSF does not provide funding for research in clinical medicine, commerce, social work, or the arts and humanities. However, its investments in basic research contribute to scientific advances in drug delivery, regenerative medicine, and the design and manufacturing of pharmaceuticals.

The NSF provides support for investigator-initiated, merit-reviewed, competitively selected awards, state-of-the-art tools, instrumentation and facilities. In FY2005, the agency received approximately 41,700 proposals for research, graduate and postdoctoral fellowships, and science, mathematics, and engineering projects, and made about 10,000 new funding awards. Support is provided to academic institutions, industrial laboratories, private research firms, and major research facilities and centers. While NSF does not operate any laboratories, it does support Antarctic research stations, selected oceanographic vessels, and national research centers. Additionally, NSF supports university-industry relationships and U.S. participation in international scientific ventures.

Most of the research supported by the NSF is conducted at U.S. colleges and universities. Approximately 82.7% (\$3,052.5 million) of NSF's estimated FY2004 \$3,689.9 million research and development (R&D) budget was awarded to U.S. colleges and universities. Preliminary data reveal that in FY2004, NSF provided approximately 58.7% of all federally funded **basic** research conducted at the nation's colleges and universities, with the exclusion of biomedical research sponsored by the National Institutes of Health.<sup>3</sup>

**Figure 1. NSF R&D Support in FY2005 Constant Dollars, FY1997 - FY2006**



**Source:** National Science Foundation FY2007 Budget Request to Congress, p.32

<sup>3</sup> While the FY2004 R&D appropriation of \$3,689.9 million for NSF was only 3.7% of the total federal R&D budget, the agency plays a significant role in maintaining the academic research enterprise. Preliminary FY2004 data reveal that the NSF provided 13.1% of all federally supported basic research and 13.7% of federal academic research. In addition, NSF was the second largest federal supporter of academic research in FY2004, eclipsed by the Department of Health and Human Services, which provided 71.0%. The Department of Defense, the third largest supporter of academic research, provided 5.0%. *Federal Funds for Research and Development: Fiscal Years 2002, 2003, and 2004*, Tables C-10, and C-59.

The NSF is an independent agency in the executive branch and under the leadership of a presidentially appointed Director and a National Science Board (NSB) composed of 24 scientists, engineers, and university and industry officials involved in research and education. The NSB and the Director make policy for the NSF.

**Organization and Fiscal Year 2007 Request.** The NSF has witnessed considerable growth during a period of constrained research budgets. When measured in current dollars, its total appropriation increased more than 69.2% in 10 years — FY1997, \$3,298.8 million; FY2001, \$4,459.9 million; and FY2006, \$5,581.2 million. Even when inflation is taken into account, its growth increased (in constant FY2005 dollars) by 42% during this 10-year period. The FY2007 request for the NSF is \$6,020 million, a 7.9% increase (\$439 million) over the FY2006 level of \$5,472.8 million. The President's American Competitiveness Initiative proposes to double the NSF budget over the next 10 years. The FY2007 request is to be the first installment toward that doubling effort. The FY2007 request for NSF provides support for several interdependent priority areas: broadening participation in the science and engineering enterprise, providing world-class facilities and infrastructure, advancing research at the frontier, and bolstering K-12 education. NSF will invest approximately \$640 million in programs targeted at those groups underrepresented in the science and engineering workforce. NSF asserts that international research partnerships are critical to the nation in maintaining a competitive edge, addressing global issues, and capitalizing on global economic opportunities. To address these particular needs, the FY2007 request proposes \$40.6 million for the Office of International Science and Engineering. Also, NSF will continue in its leadership role in planning U.S. participation in observance of the International Polar Year which spans 2007 and 2008. A first-year investment of \$62 million is provided to address major challenges in polar research. Other FY2007 highlights include funding for the National Nanotechnology Initiative (\$373.2 million), investments in Climate Change Science Program (\$205.3 million), continued support for homeland security (\$384.2 million), and funding for Networking and Information Technology Research and Development (\$903.7 million). Also, a new effort in the FY2007 request will be a \$20 million program of fundamental research on new technologies for sensor systems that detect explosives.

Included in the FY2007 request is \$4,666 million for Research and Related Activities (R&RA), a 7.7% increase (\$334.5 million) over the FY2006 level of \$4,331.5 million. R&RA funds research projects, research facilities, and education and training activities. Partly in response to concerns in the scientific community about the imbalance between support for the life sciences and the physical sciences, the FY2007 request provides increased funding for the physical sciences—\$248.5 million, a 6.6% increase (\$15.4 million) over the FY2006 estimate. R&RA includes Integrative Activities (IA), and is a source of funding for the acquisition and development of research instrumentation at U.S. colleges and universities, disaster research teams, Partnerships for Innovation, and the Science and Technology Policy Institute. The FY2007 request for IA is \$131.4 million, a 4.2% decrease (\$5.8 million) from the FY2006 estimate. The Office of Polar Programs (OPP), funded in the R&RA, is proposed at \$438.1 million in the FY2007 request, 12.5% above FY2006. Significant increases in OPP for FY2007 have been directed at the programs for arctic and antarctic sciences. In FY2006, responsibility for funding the costs of icebreakers that support scientific research in polar regions was transferred from the

U.S. Coast Guard to NSF.<sup>4</sup> The NSF will continue to operate and maintain the three icebreakers.

The FY2007 request supports seven major directorates and other programs and activity accounts. The directorates are the Biological Sciences; Computer and Information Science and Engineering; Education and Human Resources; Engineering; Geosciences; Mathematical and Physical Sciences; and Social, Behavioral, and Economic Sciences. Six of the seven directorates are in the R&RA. In addition to the directorates, the R&RA includes the OPP and IA. The seven major directorates are described below.

**Biological Sciences (BIO).** The FY2007 request of \$607.9 million for the BIO Directorate supports programs structured to improve scientific understanding of biological phenomena, ranging from the study of fundamental molecules of living organisms to the complexity of biological systems. Types of support provided include research workshops, symposia, conferences, the improvement of research collections, purchase of scientific equipment, and operation of research facilities.

**Computer and Information Science and Engineering (CISE).** The CISE Directorate, proposed at \$526.7 million in FY2007, supports programs focused on the fundamental understanding of computing and information processing, and the use of state-of-the-art computational techniques in scientific and engineering research. Currently, areas of research emphasized are parallel processing, automation and robotics, large-scale integrated electronic systems, scientific computing, and networking.

**Education and Human Resources (EHR).** The FY2007 request of \$816.2 million for EHR supports science, engineering, mathematics, and technology education. People receiving support from the EHR include senior researchers, postdoctoral associates, graduate and undergraduate students, and teachers and students at the precollege level. Additional support is provided to individuals through informal science activities.

**Engineering (ENG).** The ENG, with a request of \$628.6 million in FY2007, is directed at enhancing the long-term economic strength and security of the Nation by fostering innovation and excellence in engineering education and research. It focuses on integrating education and research in interdisciplinary areas such as information and communication technologies, biotechnology, and environmental research.

**Geosciences (GEO).** The FY2007 request of \$744.9 million for the GEO Directorate provides support to programs that promote knowledge and discussions concerning earth, including the sun, atmosphere, continents, oceans, and interior, and the linkages among them. One of the objectives of the GEO is to expand the knowledge of the biological, chemical, geological, and physical processes in the ocean, and at its boundaries, with the atmosphere and the earth's crust.

---

<sup>4</sup> While the NSF does not own the ships, it is responsible for the operation, maintenance, and staffing of the vessels. The United States has maintained a presence in the Antarctic for almost 40 years, and 90% of the icebreakers duties are devoted to polar research. NSF has been directed to pursue alternative sources of funding for the icebreaking fleet beyond 2006.

**Mathematical and Physical Sciences (MPS).** The FY2007 request of \$1,150.3 million for the MPS would fund programs designed to increase the knowledge base in the relevant sciences; improve the quality of educational programs, with emphasis at the undergraduate level; improve the rate at which research efforts are translated into societal benefits; and increase the diversity of approaches and individuals in the mathematical and physical sciences.

**Social, Behavioral, and Economic Sciences (SBE.)** The SBE Directorate, proposed at \$213.8 million in FY2007, supports programs directed at developing basic scientific knowledge about human behavior, culture, interaction, and decisionmaking, and about social, political, and economic systems, organizations, and institutions. The SBE also serves as the nation's primary data source on science and engineering human, institutional, and financial resources.

**Other Program Activities and Accounts.** The Major Research Equipment and Facilities Construction (MREFC) account is funded at \$240.5 million in the FY2007 request, a 26% increase over FY2006. The MREFC supports the acquisition and construction of major research facilities and equipment that extend the boundaries of science, engineering, and technology. First priority for funding is directed at ongoing projects. Second priority is given to projects that have been approved by the NSB for new starts. NSF requires that in order for a project to receive support, it must have "the potential to shift the paradigm in scientific understanding and/or infrastructure technology." Five ongoing projects and two new starts are funded in the FY2007 request. Projects receiving support are the Atacama Large Millimeter Array Construction (\$47.9 million), EarthScope (\$27.4 million), IceCube Neutrino Observatory (\$28.7 million), National Ecological Observatory Network (\$12 million), Scientific Ocean Drilling Vessel (\$42.9 million), Alaskan Region Research Vessel (\$56 million), and Ocean Observatories Initiative (\$13.5 million).

The EHR is proposed at \$816.2 million in FY2007, a 2.5% increase (\$19.5 million) over FY2006. The EHR portfolio is focused on increasing the technological literacy of all citizens, preparing the next generation of science, engineering, and mathematics professionals, and closing the achievement gap in all scientific fields. Support at the educational levels is: precollege, \$215 million; undergraduate, \$196.8 million; and graduate, \$160.6 million. The Math and Science Partnership Program (MSP) is funded at \$46 million, 27.2% below FY2006. Funding will support ongoing awards (no new partnerships are proposed), data collection, evaluation, and dissemination. Added support is given to programs directed at increasing the number of underrepresented minorities in science, mathematics, and engineering. Among these targeted programs in the FY2007 request are the Historically Black Colleges and Universities Programs (\$29.7 million), Tribal Colleges and Universities Program (\$12.4 million), Louis Stokes Alliances for Minority Participation (\$39.7 million), and Centers of Research Excellence in Science and Technology (\$24.9 million). Funding for the Experimental Program to Stimulate Competitive Research (EPSCoR) is \$100 million in the FY2007 request, a slight increase of \$1.3 million over the FY2006 estimate.

**Policy Issues.** There has been considerable debate in the academic and scientific community and in Congress about the management and oversight of major projects selected for construction and the need for prioritization of potential projects funded in the MREFC account. One continuing question has focused on the process for including

major projects in the upcoming budget cycle. Appropriation language directed the NSF to improve its oversight of large projects by developing an implementation plan that included comprehensive guidelines and project oversight review. In September 2005, the NSB released its management report on the new guidelines for the development, review, and approval of major projects — *Setting Priorities for Large Research Facility Projects Supported by the National Science Foundation*.<sup>5</sup> The report describes facilities under construction and those being considered for future funding. Because of the changing nature of science and technology, NSF finds it necessary to have the flexibility of reconsidering facilities at the various stages of development. Also, the NSF states that it must be able to respond, effectively, to possible changes in interagency participation, international and cooperative agreements, or co-funding for major research facilities. NSF encourages project planning from disciplines and fields in which scientists and engineers have not traditionally partnered or collaborated. The report notes that while some “concepts” may evolve into MREFC candidates, others may prove infeasible for major project support. The facility plan will be updated as needed.

Several pieces of competitiveness legislation have been introduced in the 109<sup>th</sup> Congress that have as a key provision, funding and strengthening science and mathematics education. There are concerns about the nation’s continued ability to compete in world markets and to produce a scientific and technical workforce that would ensure economic prosperity and military capability. The Administration’s *American Competitiveness Initiative* contends that there are several “gaps” in the educational system that need to be addressed in order to better prepare U.S. students for a workforce that is increasingly more scientifically and technically proficient.<sup>6</sup> The priorities of the NSF are to advance the productivity of research for students and teachers and to increase the number of U.S. students pursuing scientific and technical disciplines. However, there are proposed cuts and level funding for several science education programs in NSF’s FY2007 budget request. Also, there are reported efforts to shift support for some programs to the Department of Education. Overall, support for EHR has declined from \$944.1 million in FY2004 to \$816.2 million in the FY2007 request. Questions are being raised as to whether the NSF can address the “gaps” and effectively continue in its explicit mission and responsibility to improve science and mathematics education with the current level of funding.<sup>7</sup> In March 2006, the NSB approved a commission to prepare a national action plan for improving science and mathematics education. A report is expected in one year.

On June 29, 2006, the House passed H.R. 5672, Science-State-Justice-Commence Appropriation Bill, FY2007 (H.Rept. 109-520). The bill provides \$6,020 million for the NSF in FY2007, the amount requested by the Administration. Included in the funding is \$4,666 million for R&RA, again, the same as the request. The MREFC is funded at \$237.3 million, \$3 million below the Administration’s request. The EHR is funded at \$832.4 million, approximately \$16.2 million above the request. Included in the amount for the EHR is \$105 for EPSCoR, \$5 million above the amount requested.

---

<sup>5</sup> National Science Board, *Setting Priorities for Large Research Projects Supported by the National Science Foundation*, NSB05-77, Arlington, VA, September 2005, 31 pp.

<sup>6</sup> Office of Science and Technology Policy, Domestic Policy Council, *American Competitiveness Initiative - Leading the World In Innovation*, February 2006, Washington, DC, 23 pp.

<sup>7</sup> Mervis, Jeffrey, “National Science Foundation: Is the Education Directorate Headed for a Failing Grade?,” *Science*, v. 311, February 24, 2006, pp. 1092-1093.