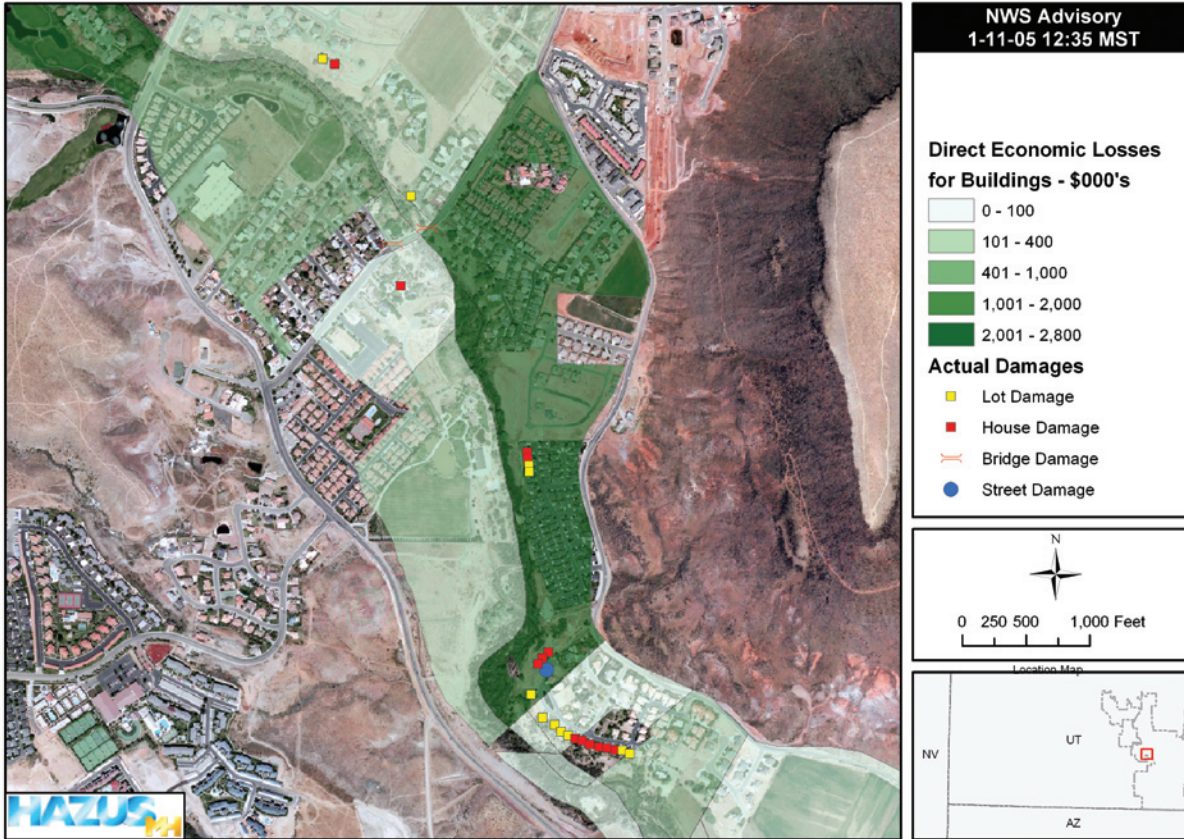


# Santa Clara and Virgin Rivers Flood: City of St. George, Utah



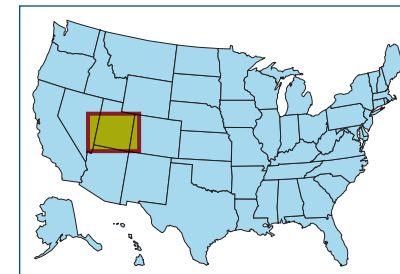
## POTENTIAL USES

### Pre-Disaster:

- Estimation of economic losses for buildings as a result of flooding in the City of St. George.

### Post-Disaster:

- Estimation of potential economic losses for buildings from the effects of flooding.
- Identification of areas within the county that are expected to sustain building damage.
- Identification of streets and bridges that have been flooded.
- Identification and prioritization of areas to be surveyed by damage assessment teams.



## DATA AND ANALYSIS DISPLAYED:

- Estimated flood depth grid developed from discharge values provided by the National Weather Service.
- Digital aerial photo of St. George, UT.
- USGS 1/3-arcsecond digital elevation model.
- Study region boundaries - US Census data.



FEMA