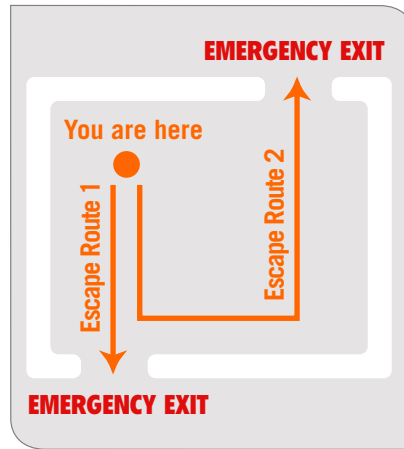


MAKE A PLAN IN A HIGH-RISE BUILDING



1. Use available information to evaluate the situation. Note where the closest emergency exit is.



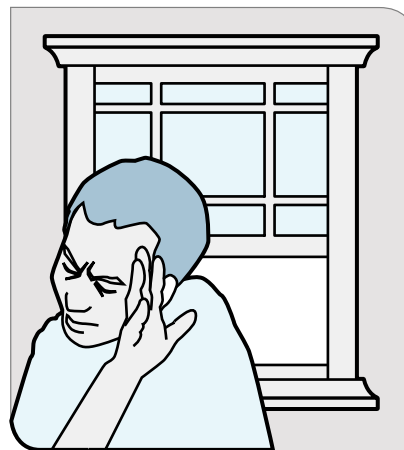
2. Be sure you know another way out of the building in case your first choice is blocked.



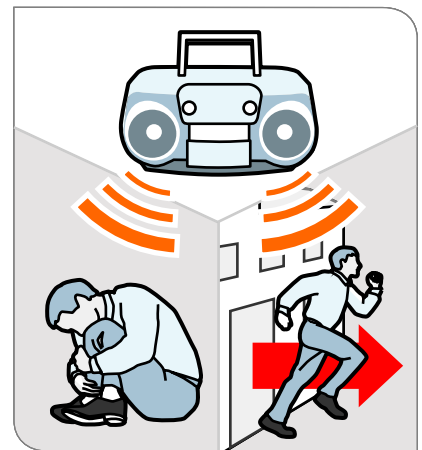
3. Take cover against a desk or table if things are falling.



4. Move away from file cabinets, bookshelves or other things that might fall.



5. Face away from windows and glass. Move away from exterior walls.



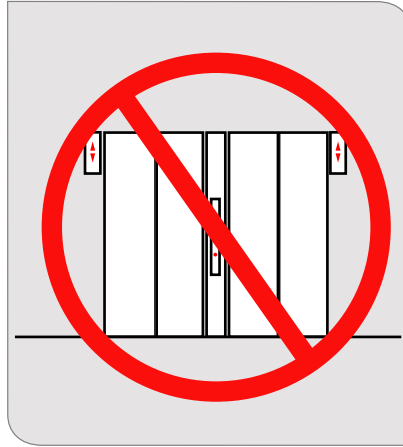
6. Determine if you should stay put, "shelter-in-place" or get away. Listen for and follow instructions from authorities.

MAKE A PLAN

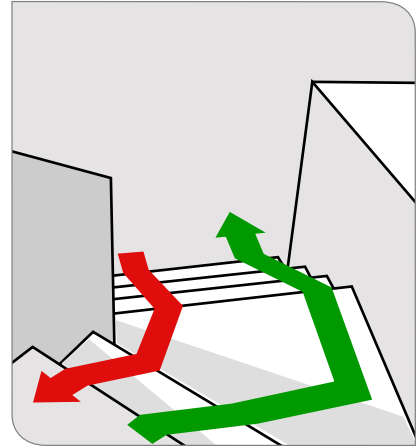
IN A HIGH-RISE BUILDING



7. Take your emergency supply kit, unless there is reason to believe it has been contaminated.



8. Do not use elevators.



9. Stay to the right while going down stairwells to allow emergency workers to come up the stairs into the building.