



Mapping & Analysis for Public Safety Program

*A program to advance applied and
basic research involving the spatial
analysis of crime...*

MAP
OF THE CITY OF
WASHINGTON
and
GEORGETOWN D.C.
PUBLISHED BY W. H. MORRISON
1876.



A Program to Advance...

- **Basic Research in Spatial Analysis**

- **Theory:** Selecting and supporting research efforts from the academic community in regards to developing spatial analysis theory as it applies to criminology and policing.
- **Studies:** Analysis of the impact in regards to the implementation of spatial technologies having on law enforcement agencies and their communities.

- **Applied Research in Spatial Analysis**

- **Technology:** Selecting and supporting efforts to develop spatial technologies for use in criminology and policing.
- **Practice:** Providing resources and guidance for applied researchers and field practitioners to move research and development from the laboratory to the field.

A historical map of Washington, D.C. and Georgetown, D.C. from 1876. The map shows a dense grid of streets and buildings. The Potomac River is visible on the right side. The text 'GEORGETOWN' is visible in the upper left corner. The title 'MAP OF THE DISTRICT OF COLUMBIA AND GEORGETOWN D.C.' is visible in the lower right corner, along with the publisher's name 'PUBLISHED BY W. H. MORRISON' and the year '1876'.

About the Program

- **Affiliation**

- U.S. DOJ - Washington, DC

- National Institute of Justice; Office of Research and Evaluation

- **Staffing**

- 4 full-time, 1 intern

- **Partnership/Coordination**

- Community Oriented Policing program (COP's)

- International Association of Crime Analysts (IACA)

- Police Executive Research Forum (PERF)



Mission and Purpose

...to enhance the application of spatial analysis in criminology and policing through...

RESEARCH

EVALUATION

DEVELOPMENT

DISSEMINATION

...to bridge the gap between research & practice.



RESEARCH

- **Fellowship program**
 - Building an interdisciplinary knowledge base.
- **Intramural research**
 - Spatial Analysis of Homicides in Washington DC
 - A Multi-Method Exploration of Crime “Hot Spots”
 - Using GIS to Map Crime Victim Services
- **Extramural research**
 - Over 30 grants in basic and applied research on spatial analysis of crime.

DEVELOPMENT

A historical map of Washington, D.C. and Georgetown, D.C. from 1876. The map shows a dense grid of streets and buildings. The Potomac River is visible on the right side, with the title 'BRANCH' written along its course. The text 'GEORGETOWN' is visible in the upper left corner. The title 'MAP OF THE CITY OF WASHINGTON and GEORGETOWN D.C.' is printed in the lower right, along with the publisher's name 'PUBLISHED BY W. H. MORRISON' and the year '1876'. The map is overlaid with a semi-transparent red text box containing a list of bullet points.

- Archive of geocoded crime statistics.
- Training programs for mapping and spatial analysis of crime.
- Mapping for corrections and other criminal justice applications .
- Analytic and visualization software.
- Spatial Data Warehousing.



EVALUATION

- **Survey of law enforcement agencies**
 - Crime Mapping Needs, Software Applications
- **Evaluation of GIS & other Spatial Technologies implementation**
 - What works?
 - What has made the greatest difference?
 - What is the level of impact on law enforcement organizations and communities?

OF THE CITY OF
WASHINGTON
and
GEORGETOWN D.C.
PUBLISHED BY W. H. MORRISON
1876.

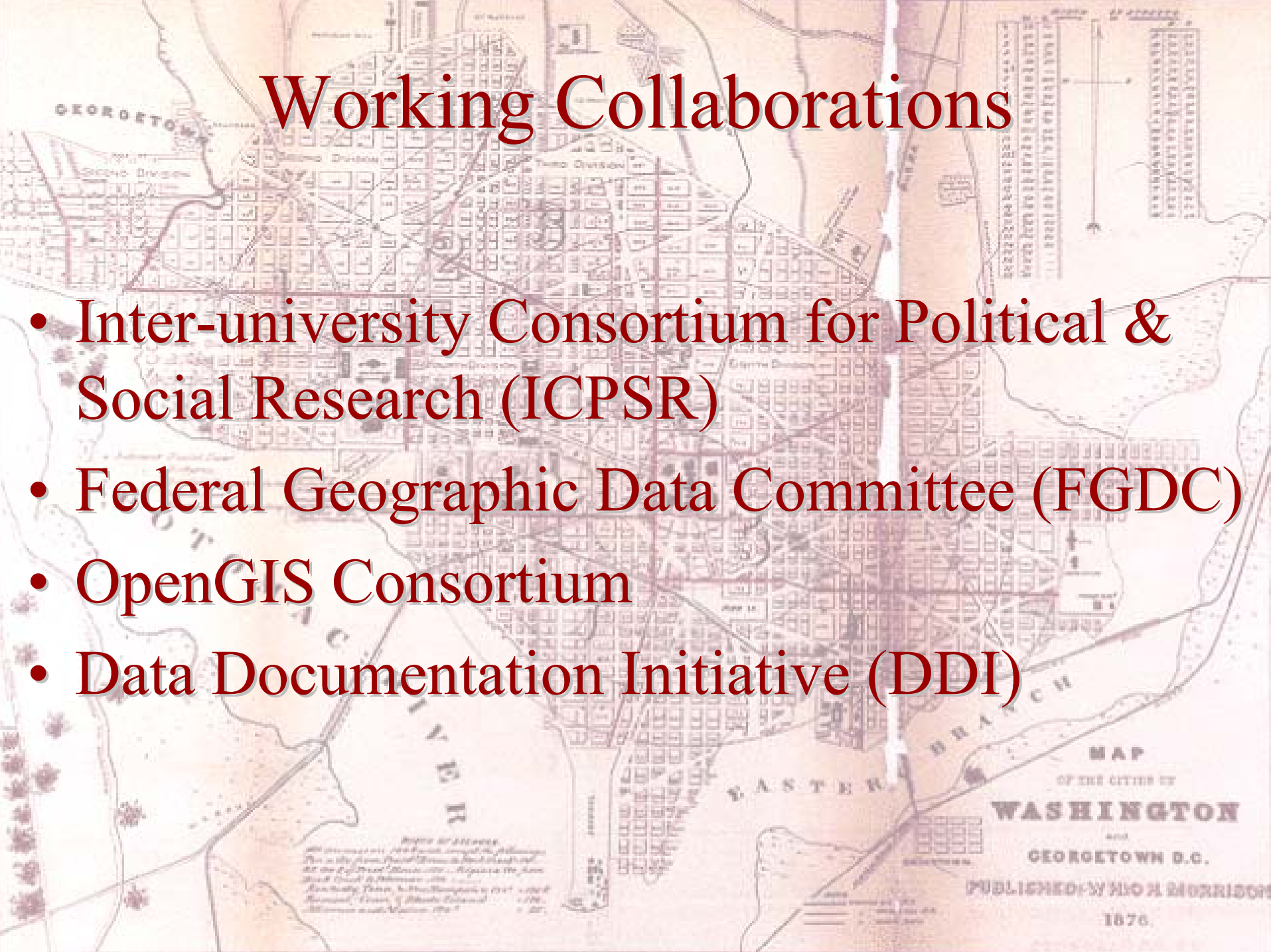
DISSEMINATION

A historical map of Washington, D.C. and Georgetown, D.C. The map shows a grid of streets, the Potomac River, and various landmarks. The title 'MAP OF THE CITY OF WASHINGTON and GEORGETOWN D.C.' is visible in the bottom right corner, along with the publisher's name 'PUBLISHED BY W. H. MORRISON' and the year '1876'. The word 'GEORGETOWN' is written in the top left corner, and 'WASHINGTON' is written vertically in the middle left. The Potomac River is labeled 'POTOMAC RIVER' and 'NEW BRANCH'.

- **Conferences & workshops**
- **Reports and Data**
 - **Privacy in the Information Age**
 - **Crime Mapping Case Studies**
- **CMRC Web Site:**
www.ojp.usdoj.gov/nij/maps
- **“Crimemap,” a listserv**
 - **Over 600 subscribers**

Working Collaborations

- Inter-university Consortium for Political & Social Research (ICPSR)
- Federal Geographic Data Committee (FGDC)
- OpenGIS Consortium
- Data Documentation Initiative (DDI)



Our Contribution to Homeland Security

- Providing support from the Bottom-Up.
- Geospatial Repository for Analysis & Safety Planning.
- Horizontal Integration: same type of data different area.
- Vertical Integration: same area different type of data.

MAP OF
WASHINGTON
and
GEORGETOWN D.C.
PUBLISHED BY W. H. MORRISON
1876.

A historical map of Washington, D.C. and Georgetown, D.C. from 1876. The map shows the city grid, the Potomac River, and various landmarks. Overlaid on the map is the title 'Our Contribution to Homeland Security' and a list of bullet points. The map includes labels for 'GEORGETOWN', 'WASHINGTON', 'POTOMAC R.', 'SOUTHWEST BRANCH', and 'EAST BRANCH'. The title is in a large, red, serif font. The bullet points are in a smaller, red, serif font. The map's title is 'MAP OF THE CITY OF WASHINGTON and GEORGETOWN D.C.' and it is published by 'W. H. MORRISON' in '1876'.

Our Contribution to Homeland Security

- Development of spatially enabled inter-jurisdictional crime databases.
- Grant requirement to adhere & contribute to FGDC and NSDI.
- Working to promote standards and inter-operative spatial technologies.



For More Information...

Mapping & Analysis for Public Safety

National Institute of Justice

810 7th Street, NW

Washington, DC 20531

(202) 616-4531

fax (202) 616-0275

email: maps@ojp.usdoj.gov

Web Site: www.ojp.usdoj.gov/nij/maps