

ODP Information Bulletin
No. 60 July 19, 2002

TO: All State Administrative Agency Heads
All State Administrative Agency Points of Contact

FROM: Andrew T. Mitchell
Acting Director

SUBJECT: Activation of New Data Mapping Capability in the ODP On-Line Data Collection Tool

The Office of Justice Programs (OJP), Office for Domestic Preparedness (ODP) is pleased to announce the activation of a new data mapping capability in the ODP On-Line Data Collection Tool. This capability is being provided in direct response to feedback from our state customers indicating a requirement to display jurisdictional threat, vulnerability, and responder competencies in a cartographic environment to support planning efforts at the state level. Each state will only be able to view their data. However, in the initial release of the Data Mapping Tool, data is not available for the following states: Alabama, Florida, Illinois, New Jersey, South Carolina and Vermont. Due to the unique nature of the local jurisdictions defined by these states, additional time is required to complete the necessary Data Mapping Tool functionality. This effort is currently underway, and data for use by these states should be available shortly.

The attached fact sheet provides information on how to access and make use of this new capability. For technical assistance with any of the On-Line Data Collection Tool modules, you may contact the OJP toll-free help line at: 1-888-549-9901. You may also contact your ODP State and Local Program Management Division program manager for additional information and assistance.

ODP Data Mapping Tool

The ODP Data Mapping Tool is a robust and versatile mapping tool designed to assist ODP state users in the analysis of jurisdiction data by providing them with a dynamic cartographic display of spatially enabled jurisdictions and other spatial data layers. The tool provides the user with three main capabilities for viewing jurisdictions within their state: spatial assessments, risk assessments and capabilities and needs assessments. Specific spatial data layers include state and county boundaries, cities, airports, interstates and major roads.

Once a state user accesses the ODP SAA Handbook application they can select the ODP Data Mapping Tool by clicking the 'Data Mapping Tool' link in the upper left-hand corner of the screen. The Data Mapping Tool limits the display boundary of spatially enabled jurisdiction data to the state that the user belongs to (See figure 1). The user can then click on the 'show jurisdictions' button to view all jurisdictions in their state and also view a list of the jurisdictions and their attributes. The user can then select the type of assessments they want to view: spatial, risk, or capabilities and needs.

Spatial Assessment

- Details the interstates, major roads, counties, cities and airports for a specific jurisdiction.

Risk Assessment

- The user can select a Rating Category to choose the type of risk assessment to display and then view the risk assessment for a specific jurisdiction within the state. The Data Mapping Tool uses a unique color to visually display risk assessment data for the jurisdictions.

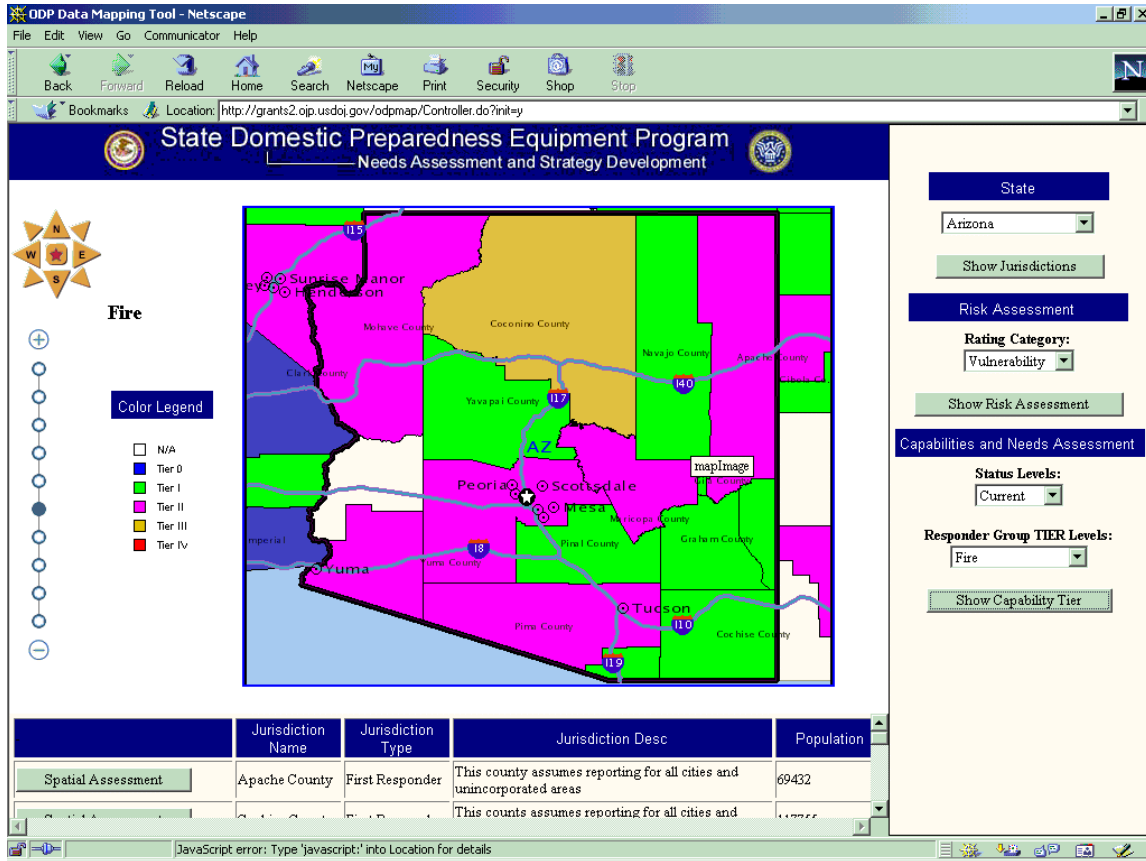
Capability and Needs Assessment

- The user can select a Status Level and a Responder Group TIER Level to display and view the capability and needs assessment for a specific jurisdiction within the state. The Data Mapping Tool uses a unique color to visually display jurisdictions based upon tier value.

Specific Data Mapping Tool Features

- Capability to allow the user to view spatial assessment data, risk assessment data and capabilities and needs assessment data for the specific jurisdictions in the state.
- Zoom capability to view more or less map detail.
- Map window to display the map image corresponding to the user defined location.
- Map navigation to allow the user to navigate to any area of the map display.
- Jurisdiction selection to enable the user to display all of the jurisdiction boundaries within the state.

Figure 1



The ODP Data Mapping Tool application layout is partitioned into 4 areas: Map Navigation, Map Display, Jurisdiction Action Buttons, and Reports. The following section provides details about the menu items and buttons in the ODP Data Mapping Tool:

<p>Show Jurisdictions</p>	<ul style="list-style-type: none"> • The Show Jurisdiction button renders all the jurisdictions and their boundaries of the user's state. • It also displays a list of jurisdictions and their attributes.
<p>Spatial Assessment</p>	<ul style="list-style-type: none"> • The Spatial Assessment button zooms into the selected jurisdiction and renders the interstates, major roads, counties, cities, and airports for that location in the map display. • It also displays a report of all airports, cities, landmarks, retail centers within the selected jurisdiction.

Vulnerability ▼

Show Risk Assessment

- Select a **Rating Category** from the pull-down list to choose the type of Risk Assessment to display.
- The **Show Risk Assessment** button displays each jurisdiction in a color based upon the range where its risk assessment value falls.

Status Level

Current ▼

Responder Group
TIER Level

Fire ▼

Show Capability Tier

- Select a **Status Level** from the pull-down list to choose the status level for display.
- Select a **Responder Group TIER Level** from the pull-down list to choose the Responder Group for display.
- The **Show Capability Tier** button displays each jurisdiction in a color based upon its tier value.